



EYNHAM ROAD, W12
£575,000 LEASEHOLD

A FANTASTIC FLAT WITH DIRECT ACCESS TO A GORGEOUS SHARED GARDEN

North Kensington | 020 7792 5000 | northkensington@winkworth.co.uk

Winkworth

for every step...

winkworth.co.uk



DESCRIPTION:

A lovely garden flat offering delightful period features; high ceilings and an abundance of light this property has wonderful charm to it.

The property can be utilised as a two-bedroom flat or as a very large one-bedroom flat with two living spaces. At the rear of the property, you have the kitchen and beautiful shared garden which also backs onto the communal gardens.

The property has great transport links with the local tube stations less than 10 minutes from the flat. You are also a short walk away from the Westfield's shopping centre where you can enjoy shopping and eating out at some of the great restaurants and bars.

AT A GLANCE

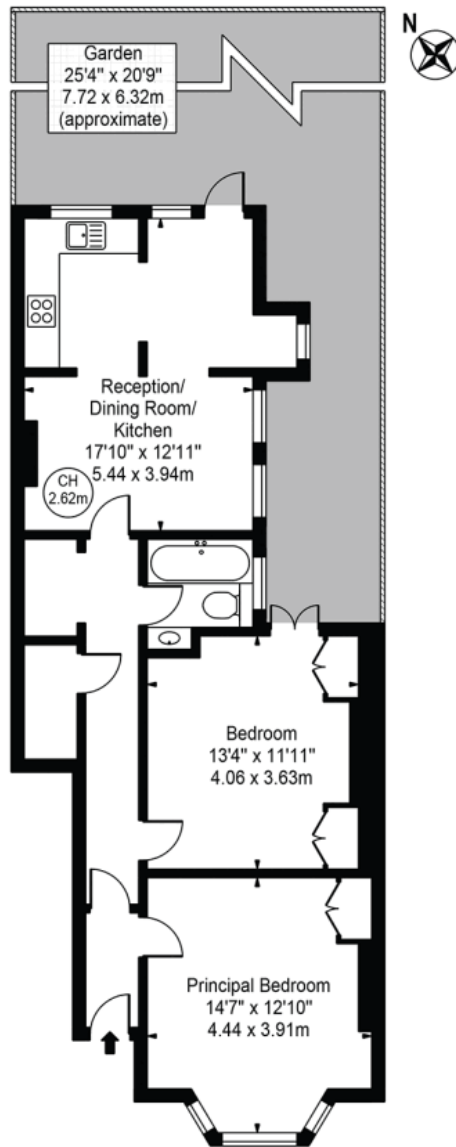
- Ground Floor Flat
- Period Building
- High Ceilings
- Two Double Bedrooms
- Plenty of Storage
- Abundance of Natural Light
- Low Service Charges
- Communal Railway Garden
- EPC Rating C





Eynham Road

Approx. Gross Internal Area 752 Sq Ft - 69.86 Sq M



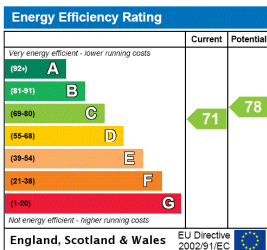
Ground Floor

For Illustration Purposes Only - Not To Scale

This floor plan should be used as a general outline for guidance only and does not constitute in whole or in part an offer or contract. Any intending purchaser or lessee should satisfy themselves by inspection, searches, enquiries and full survey as to the correctness of each statement. Any areas, measurements or distances quoted are approximate and should not be used to value a property or be the basis of any sale or let.

Copyright Morriarti Photography & Design LTD

This floorplan is for illustration purposes only and is not to scale. The position and size of doors, windows, appliances and other features are approximate.



Tenure: Leasehold

Term: 900 years+

Service Charge: Adhoc

Ground Rent: Peppercorn

Council Tax Band: Hammersmith and Fulham Band D

Where no figures are shown, we have been unable to ascertain the information. All figures that are shown were correct at the time of printing.

North Kensington | 020 7792 5000 | northkensington@winkworth.co.uk

Winkworth

for every step...

winkworth.co.uk

Winkworth wishes to inform prospective buyers and tenants that these particulars are a guide and act as information only. All our details are given in good faith and believed to be correct at the time of printing but they don't form part of an offer or contract. No Winkworth employee has authority to make or give any representation or warranty in relation to this property. All fixtures and fittings, whether fitted or not are deemed removable by the vendor unless stated otherwise and room sizes are measured between internal wall surfaces, including furnishings.