



Meadow View, Winchester, Hampshire, SO23 7FY



Meadow View, Winchester, Hampshire, SO23 7FY

Perfectly positioned family home with beautiful views

This well presented, four-bedroom house is in a beautiful position with amazing views over the fields and has been pleasantly decorated throughout. The nearby Itchen Navigation and wildflower meadows provide pretty walks. The property is in catchment for St Bede and Westgate schools and has the delightfully named Wonky Park located in front of the property making it a wonderful family home.



A spacious hallway greets visitors and to the right is the modern kitchen/dining room with a useful breakfast bar and integrated appliances that include dishwasher, oven and microwave. The dining area is a lovely space with views over the woodlands to the side of the property where deer sometimes frequent. A large cupboard allows for plenty of storage, while opposite is the bright and welcoming sitting room with patio doors leading out to the garden. A modern downstairs WC completes the accommodation on this level.



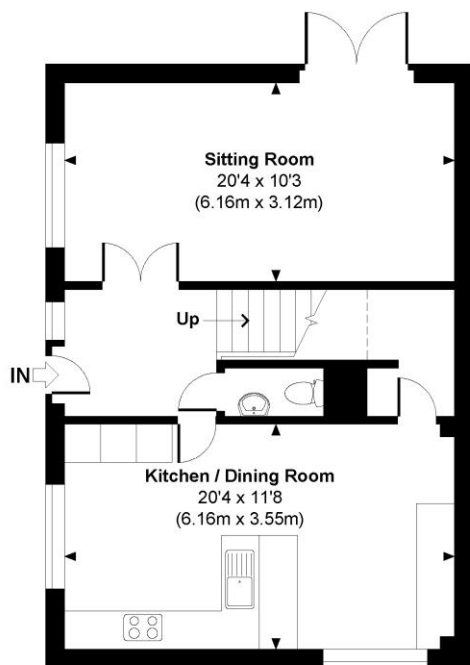
Stairs rise to the first floor where there are four bedrooms. The principal bedroom is a great size and benefits from built in wardrobes and an en-suite shower room. The remaining three bedrooms are of a good size and the contemporary family bathroom has a bath with shower over. The principal bedroom and two of the others have great views across the fields to the front.

Outside, to the side of the house is a good sized garden with a patio area for seating and the remainder laid to lawn with a fig tree in one corner, and there is a gate out to the front of the property. The garage is located in a communal area at the rear of the property providing storage with parking in front.

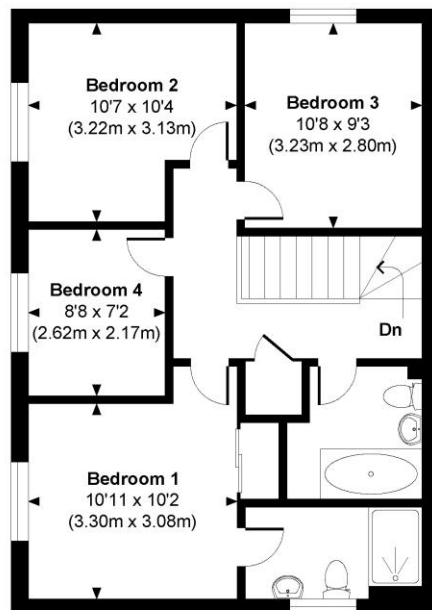


Meadow View

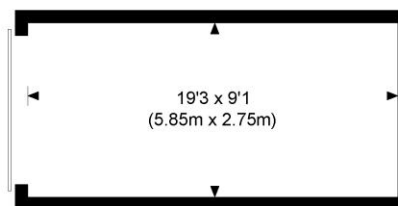
Approximate Gross Internal Area
Main House = 1207 Sq Ft / 112.15 Sq M
Garage = 173 Sq Ft / 16.09 Sq M
Total = 1380 Sq Ft / 128.24 Sq M
Outbuildings are not shown in correct orientation or location.



GROUND FLOOR



FIRST FLOOR



GARAGE



© www.propertyfocus.co | Professional Property Photography & Floorplans

This plan is for illustrative purposes only and is not to scale. If specified, the Gross Internal Area (GIA), dimensions, North point orientation and the size and placement of features are approximate and should not be relied on as a statement of fact. No guarantee is given for the GIA and no responsibility is taken for any error, omission or misrepresentation.

Meadow View, Winchester, Hampshire, SO23 7FY

Directions

Head north on Southgate Street towards St Clement Street. Turn right onto Jewry Street. Continue onto Hyde Street and turn right onto Worthy Road. Turn right onto Cassandra Road. Turn left to stay on Cassandra Road. Turn left onto Meadow View and the property is located at the end of the road.

Location

Meadow View is located on the northern fringes of Winchester, ideally located to give easy access to Winchester railway station. It is a short walk to the high street shops, boutiques, library, coffee shops, public houses, restaurants, theatre, cinema, museum and of course the city's historic cathedral. The M3 motorway, A34 and A303 are also easily accessible from this location. The property is situated within the catchments for highly regarded St Bede and Westgate schools. A nearby river and the pretty wildflower meadows provide lovely walks.

COUNCIL TAX: Band E, Winchester City Council

SERVICES: Mains Gas, Electricity, Water & Drainage.

BROADBAND: FTTC (Fibre to the Cabinet). Checked on Openreach February 2025.

MOBILE SIGNAL: Coverage With Certain Providers.

HEATING: Mains Gas Central Heating.

TENURE: Freehold.

EPC RATING: C

PARKING: Off street parking

Viewings

Strictly by appointment with Winkworth Winchester Office

[Winkworth.co.uk/winchester](https://www.winkworth.co.uk/winchester)

Winkworth Winchester

72 High Street, Winchester, SO23 9DA
01962 866 777 | winchester@winkworth.co.uk

Winkworth Country House Department

13 Charles II Street, St James's, London, SW1Y 4QU
020 7870 4878 | countryhouse@winkworth.co.uk

Winkworth

See things differently