

LENNOX GARDENS | SW1X



Winkworth



Lennox Gardens SW1X


RENT: £632.30pw / £2,740.00pcm

- One double Bedroom
- One Bathroom
- Patio
- Part furnished
- Resident Parking

LOCAL AUTHORITY: Royal Borough of Kensington & Chelsea

COUNCIL TAX BAND: Band H



Energy Efficiency Rating		
	Current	Potential
<i>Very energy efficient - lower running costs</i>		
(92+) A		
(81-91) B		
(69-80) C		76
(55-68) D	59	
(39-54) E		
(21-38) F		
(1-20) G		
<i>Not energy efficient - higher running costs</i>		
England, Scotland & Wales	EU Directive 2002/91/EC	

Knightsbridge & Chelsea | 020 7589 6616
knightsbridge@winkworth.co.uk

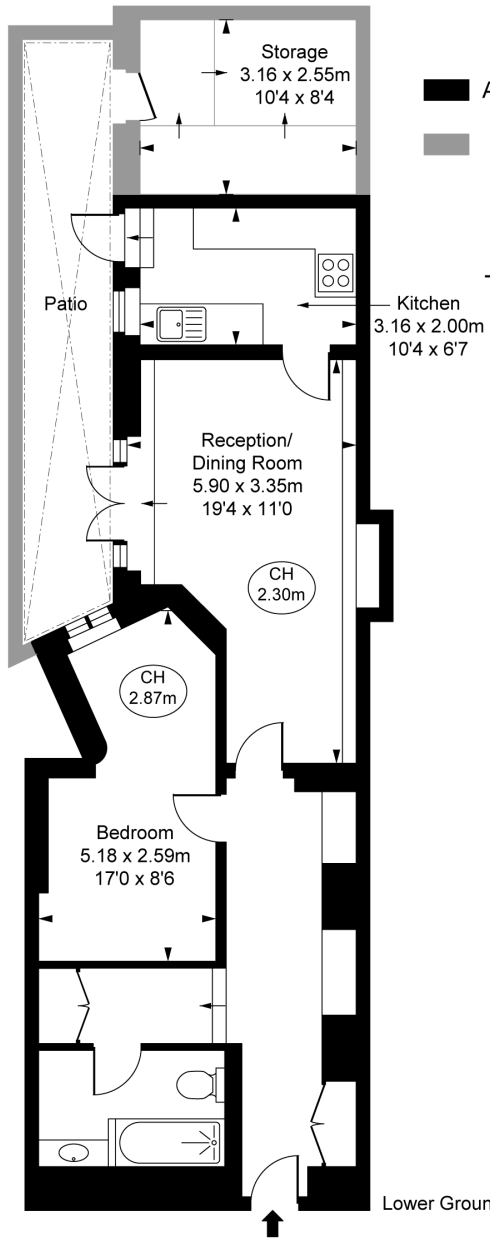


for every step...

winkworth.co.uk

Winkworth wishes to inform prospective buyers and tenants that these particulars are a guide and act as information only. All our details are given in good faith and believed to be correct at the time of printing but they don't form part of an offer or contract. No Winkworth employee has authority to make or give any representation or warranty in relation to this property. All fixtures and fittings, whether fitted or not are deemed removable by the vendor unless stated otherwise and room sizes are measured between internal wall surfaces, including furnishings.

Lennox Gardens, SW1X



■ Approximate Gross Internal Area
55.40 sq m / 596 sq ft

■ Storage
8.06 sq m / 87 sq ft

■ Patio
11.37 sq m / 122 sq ft

■ Total Areas Shown On Plan
82.89 sq m / 892 sq ft

(CH = Ceiling Heights)



Lower Ground Floor