



GLADSTONE HOUSE, GREENWICH, LONDON, SE10
£525,000 LEASEHOLD

A BEAUTIFUL TWO BEDROOM 8TH FLOOR APARTMENT, WHICH FEATURES VIEWS OF THE RIVER AND ACROSS GREENWICH TO THE ROYAL PARK, SECURE UNDERGROUND PARKING AND LOCATED JUST MOMENTS FROM THE RIVER WALK AND TOWN CENTRE.

Greenwich | 02030533033 | greenwich@winkworth.co.uk

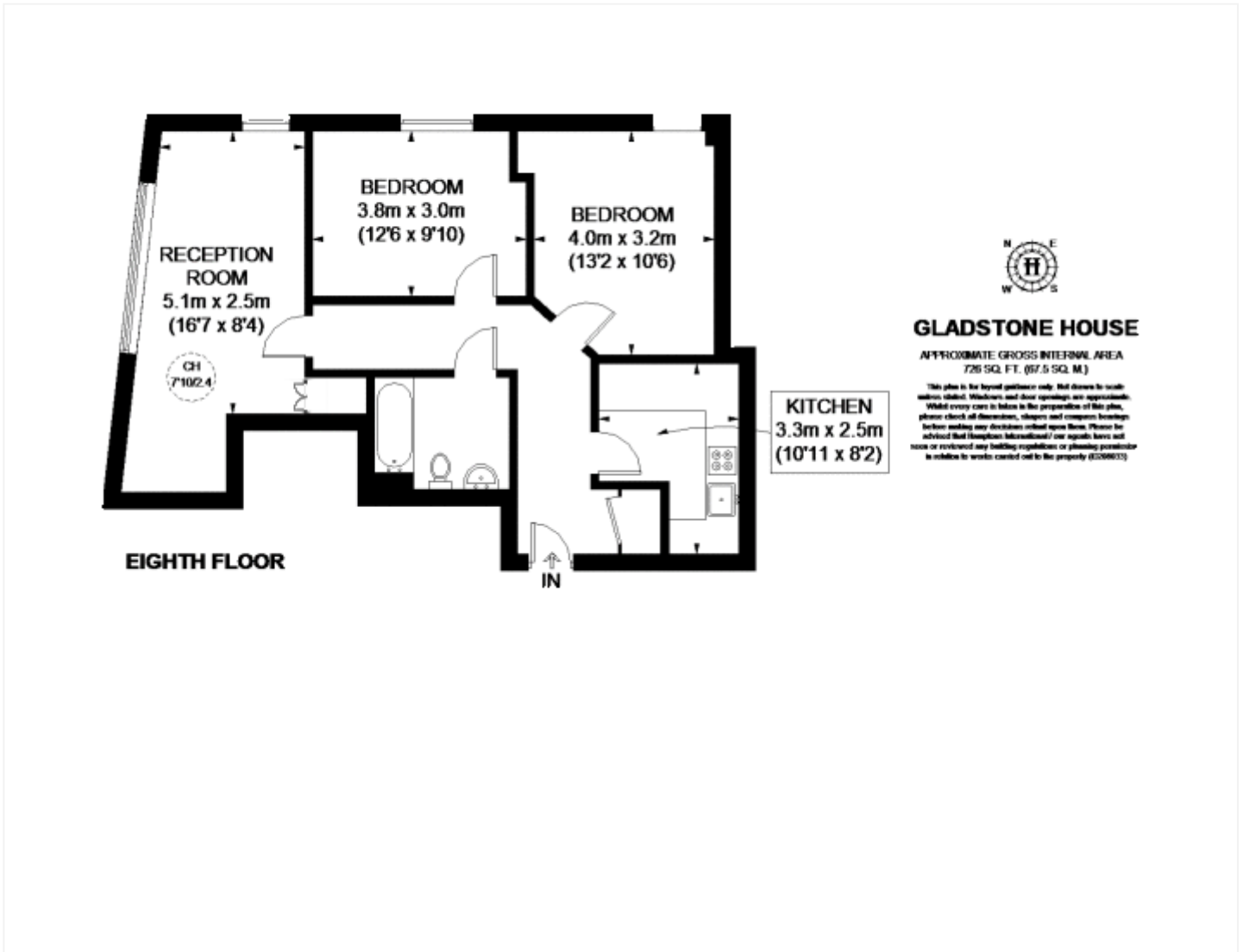


DESCRIPTION:

A beautiful two bedroom 8th floor apartment, which features views of the river and across Greenwich to The Royal Park, secure underground parking and located just moments from the river walk and town centre.

In immaculate condition throughout the property has a bright, double aspect, reception room with views over the central square and river. There are two double bedrooms with wonderful views across Greenwich, and a lovely family bathroom. The separate kitchen is well equipped with fitted white goods. Added benefits include good storage and, as mentioned, a parking spot.

Conveniently located 20 minutes from Canary Wharf, with an on-site Waitrose and Costa, it boasts excellent rail, DLR and riverboat links. New Capital Quay is a quiet and secure riverside development just a short walk west of Greenwich town centre and within easy reach of the cafes and restaurants of Deptford.



This floorplan is for illustration purposes only and is not to scale. The position and size of doors, windows, appliances and other features are approximate.

Energy Efficiency Rating		Current	Potential
Very energy efficient - lower running costs			
(92)	A		
(81-91)	B	83	83
(69-80)	C		
(55-68)	D		
(39-54)	E		
(21-58)	F		
(1-20)	G		
Not energy efficient - higher running costs			
England, Scotland & Wales		EU Directive 2002/91/EC	

