



HEREFORD MANSIONS, W2

£1,950 PER WEEK (£8,450.00 PCM) Unfurnished

A BEAUTIFULLY PRESENTED LATERAL 3 BED FLAT ON THE THIRD FLOOR OF THIS VERY POPULAR MANSION BLOCK WITH A LIFT.

3 Bedrooms, 1 Reception Room, 2 Bathrooms,
Flat/Apartment, Upper Floor with Lift, Unfurnished

Winkworth

Notting Hill | 020 77273227 | nottinghill@winkworth.co.uk

winkworth.co.uk

See things differently



DESCRIPTION:

A beautifully presented 3-bedroom laterally designed flat on the third floor (with lift) of this much sought after mansion block. The flat offers a fantastic double reception, spacious fully fitted eat-in kitchen, master bedroom with en-suite bathroom - two further double bedrooms and second bathroom - The property further benefits from a separate utility room. Available unfurnished immediately.

LOCATION:

Hereford Road is a popular, imposing residential street running north from Westbourne Grove, with a host of shops and restaurants moments away and within easy walking distance of the many transport links of both Notting Hill Gate and Queensway.

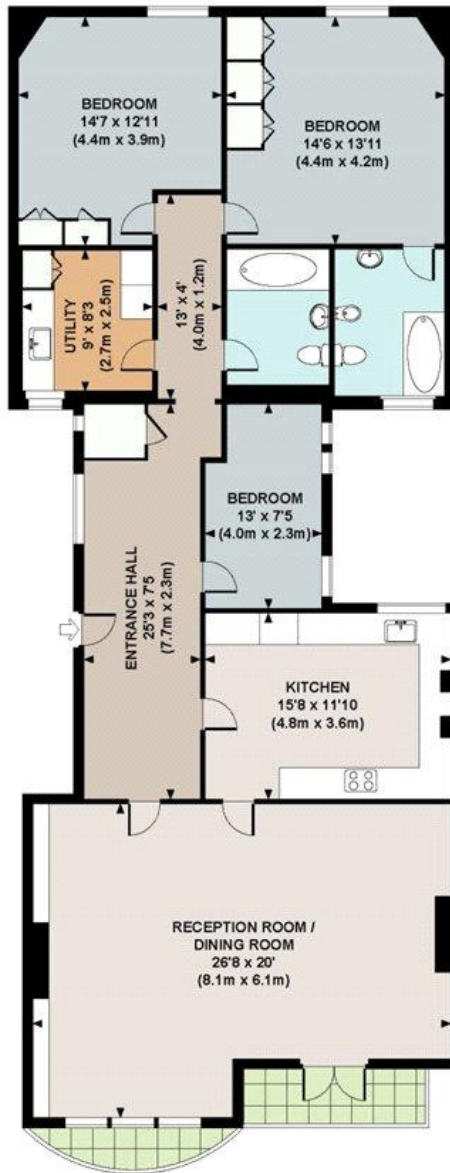
LOCAL AUTHORITY:

Westminster City



HEREFORD MANSIONS, W2

Approx. gross internal area
1627 Sq.Ft. / 151.3 Sq.M.

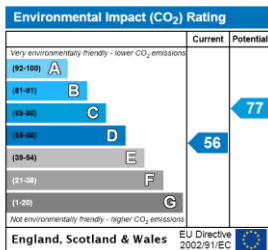
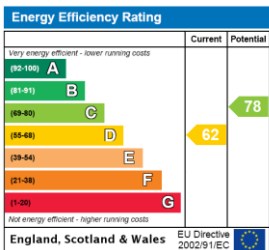


THIRD FLOOR



All measurements are approximate and for illustration purposes only as defined by the BS55 Code of Measuring Practice © 2013. Dowling Jones Design www.dowlingjones.com 020 7610 9933

This floorplan is for illustration purposes only and is not to scale. The position and size of doors, windows, appliances and other features are approximate.



Notting Hill | 020 77273227 | nottinghill@winkworth.co.uk



winkworth.co.uk

See things differently

winkworth wishes to inform prospective buyers and tenants that these particulars are a guide and act as information only. All our details are given in good faith and believed to be correct at the time of printing but they don't form part of an offer or contract. No winkworth employee has authority to make or give any representation or warranty in relation to this property. All fixtures and fittings, whether fitted or not are deemed removable by the vendor unless stated otherwise and room sizes are measured between internal wall surfaces, including furnishings.