



REEVES AVENUE, LONDON, NW9
£235,000 LEASEHOLD APPROX 134 YEARS REMAINING

BEING SOLD VIA SECURE SALE. TERMS & CONDITIONS APPLY. STARTING OFFERS £235,000

Kingsbury | 020 8204 0000 | kingsbury@winkworth.co.uk

Winkworth

for every step...

winkworth.co.uk



DESCRIPTION: A beautiful and homely one bedroom first floor maisonette positioned just off of the ever popular Church Lane, Kingsbury. This home has been well maintained over the years and consists of one double bedroom, a simplistic kitchen, a well sized reception room, a well sized bathroom, and a gorgeous rear garden. Locals will find a variety of transport links, shops, amenities, and reputable schools within close proximity. The beautiful open spaces of The Welsh Harp, Silver Jubilee Park and Fryent Country Park are also a comfortable stroll away. Wembley Park and its numerous attractions lies less than half a mile away serving the Jubilee and Metropolitan Line, and home to Wembley Stadium, Arenas, and London Designer Outlet. An internal viewing is advised.

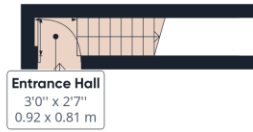


for every step...

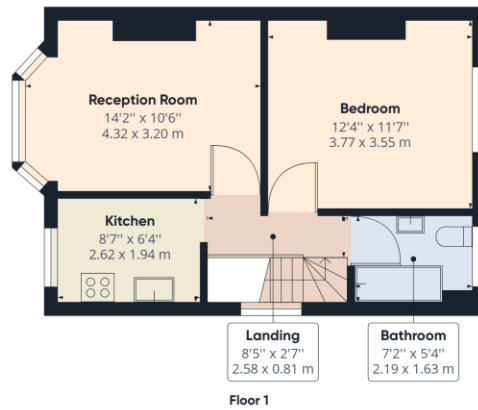


Winkworth

for every step...



Ground Floor



Approximate total area⁽¹⁾
437.52 ft²
40.65 m²

(1) Excluding balconies and terraces

While every attempt has been made to ensure accuracy, all measurements are approximate, not to scale. This floor plan is for illustrative purposes only.

GIRAFFE360

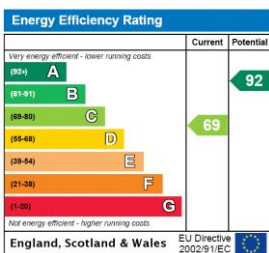
This floorplan is for illustration purposes only and is not to scale. The position and size of doors, windows, appliances and other features are approximate.

Tenure: Leasehold

Term: 133 year and 11 months

Council Tax Band: C - Brent

Where no figures are shown, we have been unable to ascertain the information. All figures that are shown were correct at the time of printing.



Kingsbury | 020 8204 0000 | kingsbury@winkworth.co.uk



for every step...

winkworth.co.uk

Winkworth wishes to inform prospective buyers and tenants that these particulars are a guide and act as information only. All our details are given in good faith and believed to be correct at the time of printing but they don't form part of an offer or contract. No Winkworth employee has authority to make or give any representation or warranty in relation to this property. All fixtures and fittings, whether fitted or not are deemed removable by the vendor unless stated otherwise and room sizes are measured between internal wall surfaces, including furnishings.