



**BUTTERFLY COURT, LONDON, N15**  
**£480,000 LEASEHOLD**

**A TWO BEDROOM, MODERN APARTMENT.**

Harringay | 020 8800 5151 | [harringay@winkworth.co.uk](mailto:harringay@winkworth.co.uk)



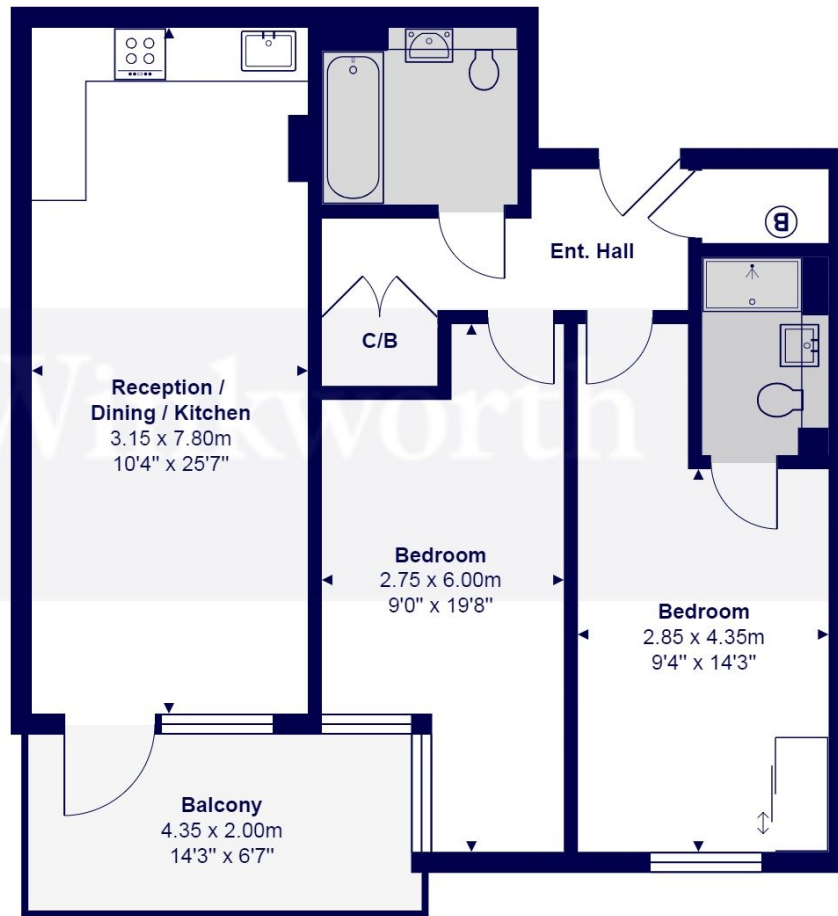
**DESCRIPTION:**

This Stylish two bedroom, 3rd floor apartment with balcony, is ideally located within a sought after location close to Seven Sisters BR-Underground St and Downhills Park.

Chain Free. Sole Agent.







## Butterfly Court, London N15

Total Area: 72.1 m<sup>2</sup> ... 776 ft<sup>2</sup> (excluding balcony)

All measurements are approximate and for display purposes only

**Winkworth**

This floorplan is for illustration purposes only and is not to scale. The position and size of doors, windows, appliances and other features are approximate.