



KESWICK ROAD, SW15  
**£3,500 PER MONTH UNFURNISHED**

**A stunning three bedroom, two bathroom penthouse apartment on Keswick Road with off street parking**

Southfields | 020 8877 1000 | southfields@winkworth.co.uk

**Winkworth**

for every step...

*winkworth.co.uk*



## **DESCRIPTION:**

A stunning three bedroom, two bathroom penthouse apartment on Keswick Road with off street parking.

This meticulous development provides dual or triple aspect living, private amenity space and is located adjacent to the Putney conservation area.

Putney offers one of the most accomplished places to live, being close to the city but with a village atmosphere. The bars and restaurants of Putney and Wimbledon Village are walkable and the convenient shopping of Putney High Street, the Farmers Market and Wandsworth Southside are close by.

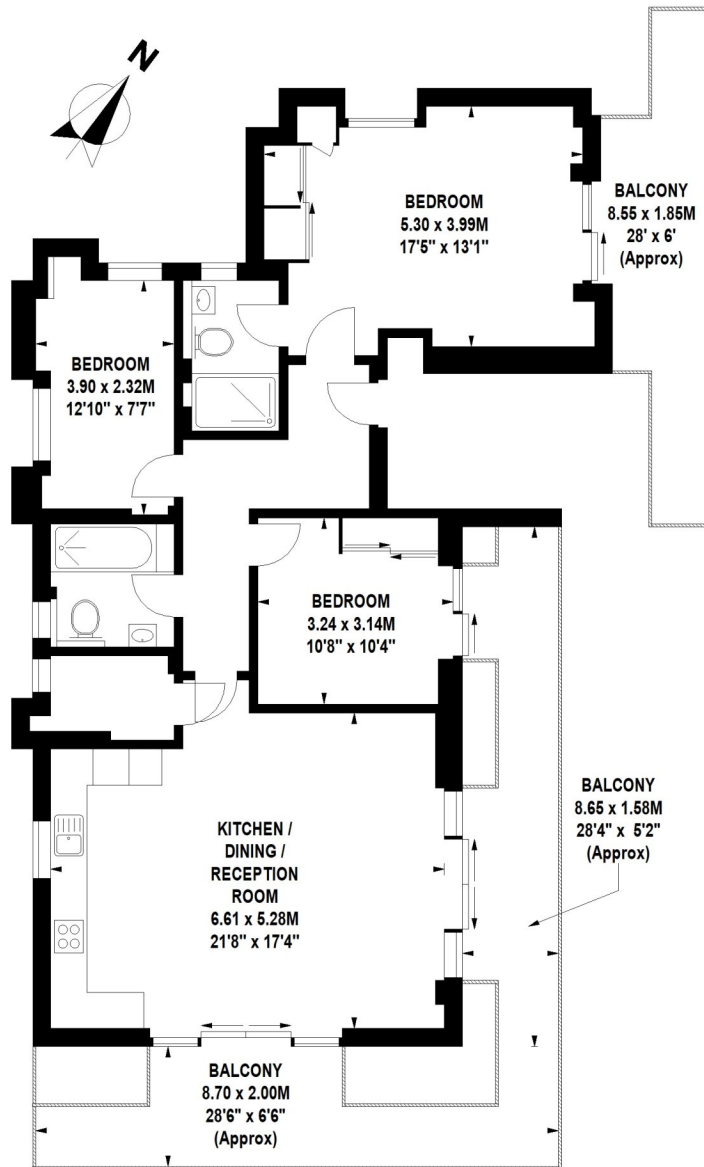
## **ACCOMMODATION**

Long Let, 3 Bedrooms, 1 Reception Rooms, 2 Bathrooms, Penthouse, Upper Floor without Lift, Balcony, Residents Parking, New, Town/City, Unfurnished, 1033 Approx Sq Ft



# Keswick Road, SW15

Approximate Gross Internal Area 96 sq.m / 1033 sq. ft



## Second Floor

Floor Plan produced for WINKWORTH by Mays Floorplans ©. Tel 020 3397 4594

Illustration for identification purposes only, not to scale

All measurements are maximum, and include wardrobes and window bays where applicable

This floorplan is for illustration purposes only and is not to scale. The position and size of doors, windows, appliances and other features are approximate.

Energy Efficiency Rating		Current	Potential
Very energy efficient - lower running costs			
(92-100) <b>A</b>			
(81-91) <b>B</b>		84	84
(69-80) <b>C</b>			
(55-68) <b>D</b>			
(39-54) <b>E</b>			
(21-58) <b>F</b>			
(1-20) <b>G</b>			
Not energy efficient - higher running costs			
England, Scotland & Wales		EU Directive 2002/91/EC	

Southfields | 020 8877 1000 | southfields@winkworth.co.uk



for every step...

winkworth.co.uk

Winkworth wishes to inform prospective buyers and tenants that these particulars are a guide and act as information only. All our details are given in good faith and believed to be correct at the time of printing but they don't form part of an offer or contract. No Winkworth employee has authority to make or give any representation or warranty in relation to this property. All fixtures and fittings, whether fitted or not are deemed removable by the vendor unless stated otherwise and room sizes are measured between internal wall surfaces, including furnishings.