



Winkworth
for every step...



Winkworth
for every step...



Winkworth
for every step...

PAGE STREET, MILL HILL, LONDON, NW7
£550,000 FREEHOLD

THREE BEDROOM SEMI DETACHED HOUSE - DEVELOPMENT PROJECT

Kingsbury | 020 8204 0000 | kingsbury@winkworth.co.uk



for every step...

winkworth.co.uk



Are you looking for a project to create your dream home? This three-bedroom semi-detached house on the popular Page Street in Mill Hill is the perfect opportunity. In need of complete refurbishment, this property offers a blank canvas for you to bring your vision to life and create the ideal living space tailored to your tastes. Situated in a sought-after area, the house benefits from excellent transport links. You'll have easy access to the M1, A41, and A406, making commuting and travel a breeze via the nearby Five Ways Corner. Families will appreciate the reputable primary and secondary schools within the catchment area, ensuring quality education options for children. The property boasts three spacious bedrooms, offering ample room for a growing family. The semi-detached layout provides additional privacy and the potential for future extensions, (STPP). With its prime location and potential, this property is a fantastic opportunity for someone with the vision and enthusiasm to transform it into a beautiful, modern home. Don't miss the chance to make this house your own in one of Mill Hill's most desirable streets.



Winkworth

for every step...

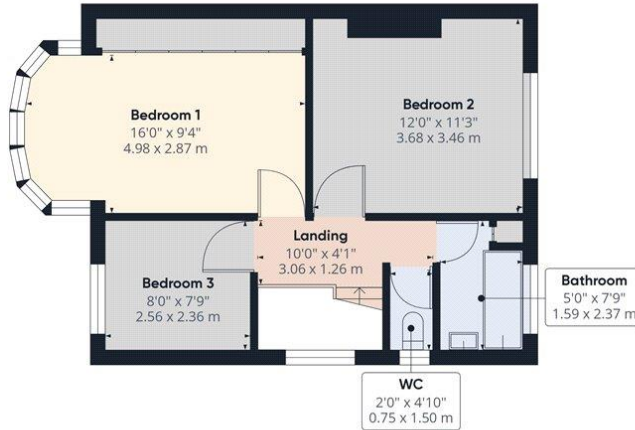


Winkworth

for every step...



Ground Floor



Floor 1

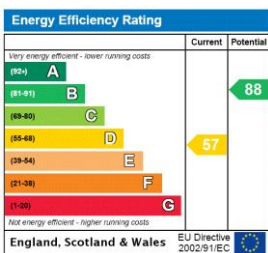
Approximate total area⁽¹⁾
1034.44 R²
96.1 m²

(1) Excluding balconies and terraces

While every attempt has been made to ensure accuracy, all measurements are approximate, not to scale. This floor plan is for illustrative purposes only.

GIRAFFE360

This floorplan is for illustration purposes only and is not to scale. The position and size of doors, windows, appliances and other features are approximate.



Tenure: Freehold

Council Tax Band: E - Barnet

Where no figures are shown, we have been unable to ascertain the information. All figures that are shown were correct at the time of printing.

Kingsbury | 020 8204 0000 | kingsbury@winkworth.co.uk

Winkworth

for every step...

winkworth.co.uk

Winkworth wishes to inform prospective buyers and tenants that these particulars are a guide and act as information only. All our details are given in good faith and believed to be correct at the time of printing but they don't form part of an offer or contract. No Winkworth employee has authority to make or give any representation or warranty in relation to this property. All fixtures and fittings, whether fitted or not are deemed removable by the vendor unless stated otherwise and room sizes are measured between internal wall surfaces, including furnishings.