



RUSHGROVE AVENUE, COLINDALE, LONDON, NW9
£315,000 SHARE OF FREEHOLD

LOVELY ONE BEDROOM FIRST FLOOR MAISONETTE WITH SCOPE FOR DEVELOPMENT

Hendon | 020 8202 1031 | hendon@winkworth.co.uk

Winkworth

for every step...

winkworth.co.uk



DESCRIPTION:

Situated on an acclaimed residential street in Colindale, this lovely first-floor maisonette offers an excellent opportunity for those looking to step onto the property ladder. Its well-connected location provides easy access to outstanding schools, bus routes, Hendon Thameslink, and Colindale.

This property offers a share of freehold tenure, providing long-term security. Inside, you'll find a spacious lounge, a separate kitchen, a double bedroom, and a bathroom with the potential for personalization. The property also benefits from newly installed windows, enhancing energy efficiency and comfort. Additionally, it offers a garden and scope for development on the adjoining land, providing future expansion opportunities and added investment potential.



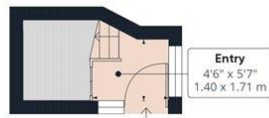
Winkworth

for every step...

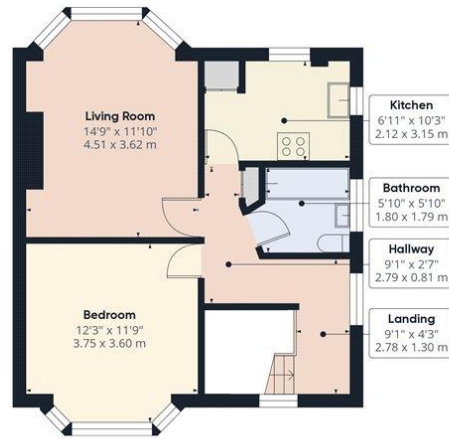


Winkworth

for every step...



Ground Floor



Floor 1

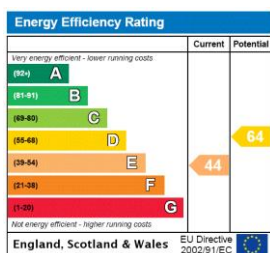
Approximate total area⁽¹⁾
 550.15 ft²
 51.11 m²

(1) Excluding balconies and terraces

While every attempt has been made to ensure accuracy, all measurements are approximate, not to scale. This floor plan is for illustrative purposes only.
 Calculations are based on RICS IPMS 3C standard.

GIRAFFE360

This floorplan is for illustration purposes only and is not to scale. The position and size of doors, windows, appliances and other features are approximate.



Tenure: Share of Freehold

Council Tax Band: C

Where no figures are shown, we have been unable to ascertain the information. All figures that are shown were correct at the time of printing.

Hendon | 020 8202 1031 | hendon@winkworth.co.uk



for every step...

winkworth.co.uk

Winkworth wishes to inform prospective buyers and tenants that these particulars are a guide and act as information only. All our details are given in good faith and believed to be correct at the time of printing but they don't form part of an offer or contract. No Winkworth employee has authority to make or give any representation or warranty in relation to this property. All fixtures and fittings, whether fitted or not are deemed removable by the vendor unless stated otherwise and room sizes are measured between internal wall surfaces, including furnishings.