



FURNESS ROAD, LONDON, NW10

£800,000 FREEHOLD

A WONDERFUL THREE DOUBLE BEDROOM, TWO BATHROOM, FREEHOLD HOUSE WITH DRIVEWAY AND PRIVATE SOUTH-EAST FACING 32FT GARDEN.

Kensal Rise & Queens Park | 0208 960 4947 | kensalrise@winkworth.co.uk

Winkworth



LOCATION:

Furness Road is a lovely wide street just to the West of All Souls Avenue in Kensal Green.

Transport links at Kensal Green or Willesden Junction mean that you access the London Overground or Underground (Bakerloo Line) or even the National Rail very easily, as well as an array of shops, cafes and Gastropubs on College Road which is around 1/4 mile walk from the flat.

Kind Edward Park and the sports centre are also a short walk away and a very popular spots with local residents.





DESCRIPTION:

A rare opportunity to purchase this lovely family home, spread over 1,109 sqft in excellent order throughout. Upon entrance, the ground floor comprises of a modern handle-less kitchen with tiled splashback and leaf breakfast table. The reception, dining room and hallway have beautiful solid wood floors, feature log burner and French style doors leading on to the private rear garden.

The garden is South-East facing and is therefore a great suntrap. Additionally, there is a guest WC on the ground floor.

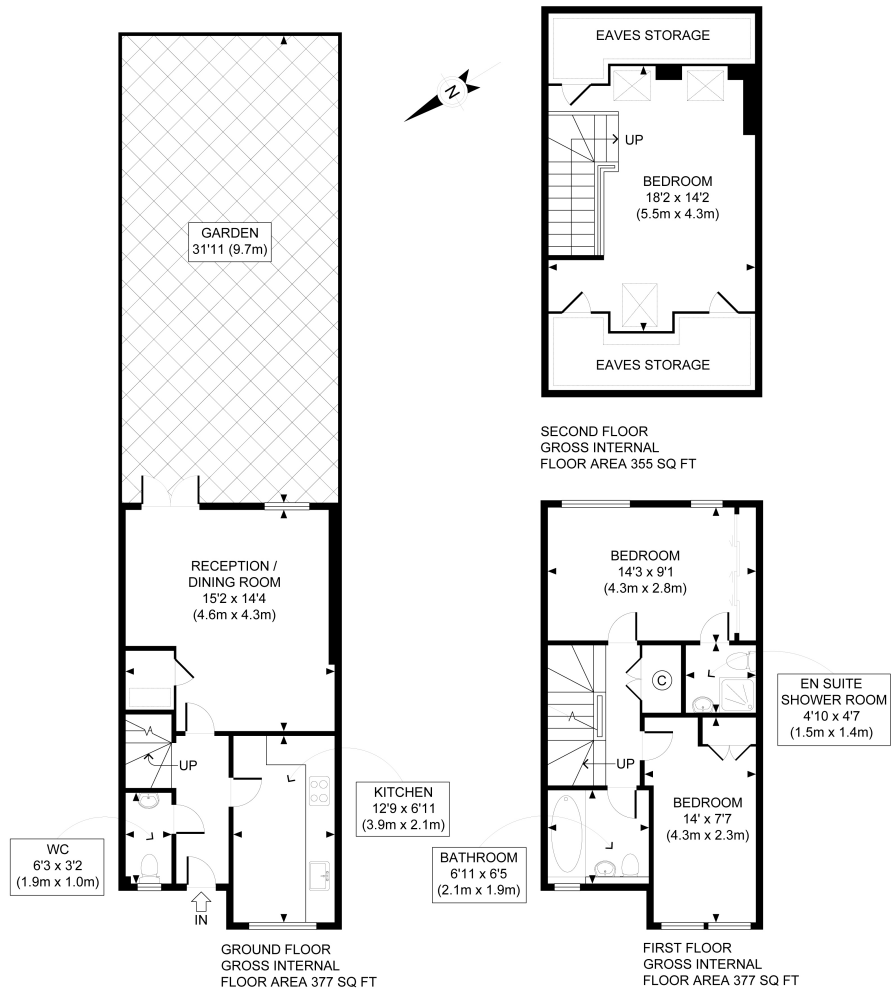
The first floor offers two spacious double bedrooms (one with en-suite shower room), and main family bathroom. The bathroom is a fully tiled and modern three piece suite.

Finally, the top floor is an enormous double bedroom with ample eaves storage. The solid wood flooring is continued through all bedrooms.

Further benefits include off street/driveway parking and no upper chain.

TENURE: FREEHOLD

Winkworth



APPROX. GROSS INTERNAL FLOOR AREA 1109 SQ FT / 103 SQ M
 Ref: LEWWKR - 140622 Copyright ph@to@pl@n

Disclaimer: Floor plan measurements are approximate and are for illustrative purposes only. While we do not doubt the floor plan accuracy and completeness, you or your advisors should conduct a careful, independent investigation of the property in respect of monetary valuation

This floorplan is for illustration purposes only and is not to scale. The position and size of doors, windows, appliances and other features are approximate.

Kensal Rise & Queens Park | 0208 960 4947 | kensalrise@winkworth.co.uk

Winkworth

winkworth.co.uk

See things differently

winkworth wishes to inform prospective buyers and tenants that these particulars are a guide and act as information only. All our details are given in good faith and believed to be correct at the time of printing but they don't form part of an offer or contract. No winkworth employee has authority to make or give any representation or warranty in relation to this property. All fixtures and fittings, whether fitted or not are deemed removable by the vendor unless stated otherwise and room sizes are measured between internal wall surfaces, including furnishings.