



LINDEN GARDENS, W2
£595 PER WEEK PART FURNISHED

**A RARE OPPORTUNITY TO RENT THIS WONDERFULLY SPACIOUS,
BRIGHT AND QUIET ONE BEDROOM FLAT ON THE GROUND FLOOR OF
THIS VERY POPULAR PORTERED BLOCK, WITH A 5-MIN WALK FROM
NOTTING HILL GATE STATION.**

Notting Hill Lettings | 0207 727 3227 | nottinghill@winkworth.co.uk

Winkworth

for every step...

winkworth.co.uk



DESCRIPTION:

A rare opportunity to rent this wonderfully spacious, bright, and quiet one bedroom flat on the ground floor of this very popular portered block, with a 5 min walk from Notting Hill Gate Station- Benefiting from its own entrance the property comprises:

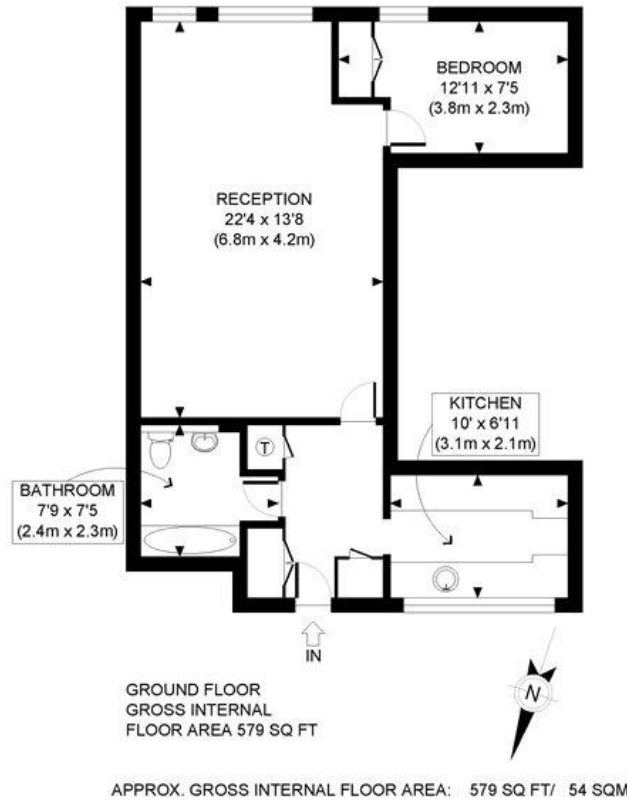
Spacious hallway, large and very bright, fully fitted kitchen, fantastically spacious living room with wonderful views and aspect over the gardens behind and a lovely bright double bedroom with built in storage -

Viewing highly recommended.

LOCATION:

The Limes is a modern apartment building peacefully located on Linden Gardens, an attractive cul de sac ideally positioned off the north side of Notting Hill Gate, around the corner from its many transport links and amenities and a short stroll from the green open spaces of Kensington Gardens.





Winkworth

This plan is for illustrative purposes only and should be used as such by any prospective client. Whilst every attempt has been made to ensure the accuracy of the Floor Plan contained here, measurements of the doors, windows, rooms and any other items are approximate and no responsibility is taken for any errors, omissions, or misstatement. The services, systems and appliances shown have not been tested and no guarantee as to the operability or efficiency can be given.

PROPERTY PHOTO PLANS.com

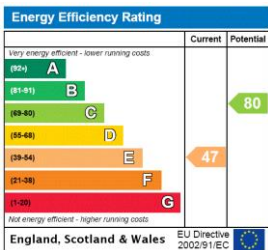
This floorplan is for illustration purposes only and is not to scale. The position and size of doors, windows, appliances and other features are approximate.

Deposit: £0.00

Holding Deposit:

Council Tax Band: F

Where no figures are shown, we have been unable to ascertain the information. All figures that are shown were correct at the time of printing.



Notting Hill Lettings | 0207 727 3227 | nottinghill@winkworth.co.uk

Winkworth

for every step...

winkworth.co.uk

Winkworth wishes to inform prospective buyers and tenants that these particulars are a guide and act as information only. All our details are given in good faith and believed to be correct at the time of printing but they don't form part of an offer or contract. No Winkworth employee has authority to make or give any representation or warranty in relation to this property. All fixtures and fittings, whether fitted or not are deemed removable by the vendor unless stated otherwise and room sizes are measured between internal wall surfaces, including furnishings.