



## Alderney Street, UK, SW1V

£1,995 PER MONTH

PART FURNISHED

### AT A GLANCE

- Double Bedroom
- Open Plan Reception
- Smart Bathroom
- Central Location
- Second Floor
- Council Tax Band: D

**Winkworth**

for every step...



| Score | Energy rating | Current | Potential |
|-------|---------------|---------|-----------|
| 92+   | A             |         |           |
| 81-91 | B             |         |           |
| 69-80 | C             | 71   c  | 77   c    |
| 55-68 | D             |         |           |
| 39-54 | E             |         |           |
| 21-38 | F             |         |           |
| 1-20  | G             |         |           |

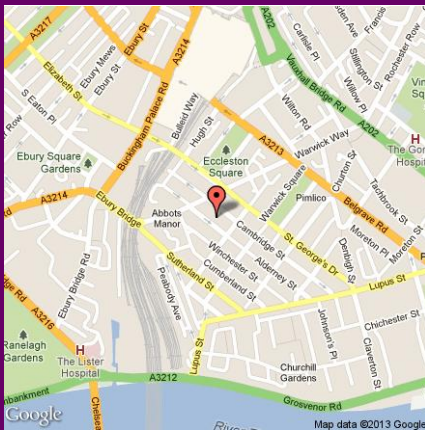
## ALDERNEY STREET, UK, SW1V

£1,995 PER MONTH  
PART FURNISHED

A well presented one double bedroom second floor apartment located in this handsome stucco fronted building within the heart of the 'Pimlico Grid'. The property is flooded with natural light throughout.

Presented in excellent decorative order, accommodation briefly comprises a bright open plan reception with modern fitted kitchen, smart family bathroom and double bedroom with storage.

Situated in a highly convenient position, the property is ideally located for the local amenities on Churton Street, Wilton Road and nearby Victoria Street. Neighbouring Belgravia and Sloane Square are also only moments away.

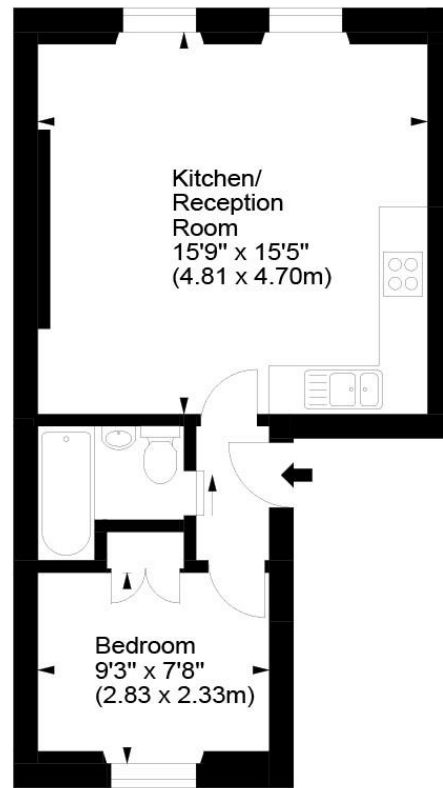


winkworth wishes to inform prospective buyers and tenants that these particulars are a guide and act as information only. All our details are given in good faith and believed to be correct at the time of printing but they don't form part of an offer or contract. No Winkworth employee has authority to make or give any representation or warranty in relation to this property. All fixtures and fittings, whether fitted or not are deemed removable by the vendor unless stated otherwise and room sizes are measured between internal wall surfaces, including fireplaces.

### Alderney Street, SW1



Approx. Gross Internal Area  
368 Sq Ft - 34.19 Sq M



Second Floor

For illustration purposes only. Not to scale.  
All measurements are taken and shown at floor level.  
www.r3photography.co.uk © Photography / Floor Plans / Lease Plans / EPCs



Pimlico & Westminster | 020 7828 1786 |  
pimlico@winkworth.co.uk

winkworth.co.uk/pimlico

# Winkworth

for every step...