



ALEXANDRA ROAD, BERKSHIRE, RG1 5PG
£1,200 PER MONTH UNFURNISHED

**SPACIOUS TWO BEDROOM SECOND FLOOR
APARTMENT SITUATED IN A QUIET
LOCATION IN EAST READING.**

Reading | 0118 4022 300 | reading@winkworth.co.uk

Winkworth

for every step...

winkworth.co.uk



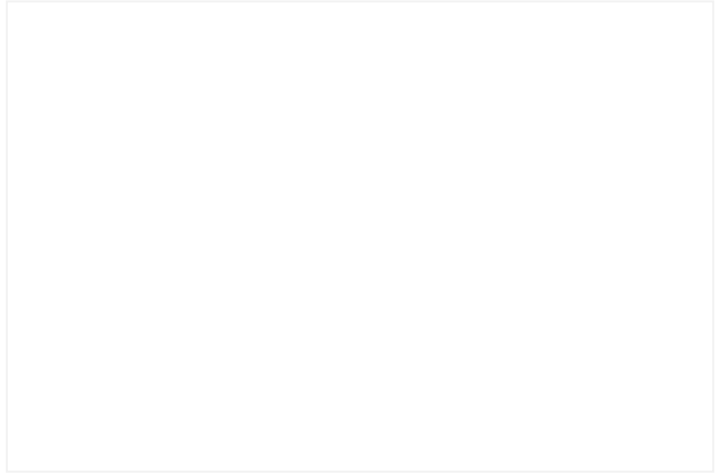
DESCRIPTION:

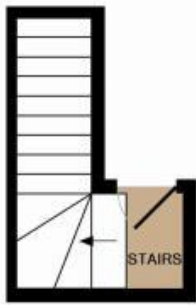
Spacious two bedroom second floor apartment situated in a quiet location of East Reading and close to the Royal Berkshire Hospital and Reading town centre. The property comprises of an open plan lounge / diner, kitchen with appliances, two double bedrooms and a shower room. Added benefits include double glazing and residents parking. Available 1st November 2024. Unfurnished.

AT A GLANCE

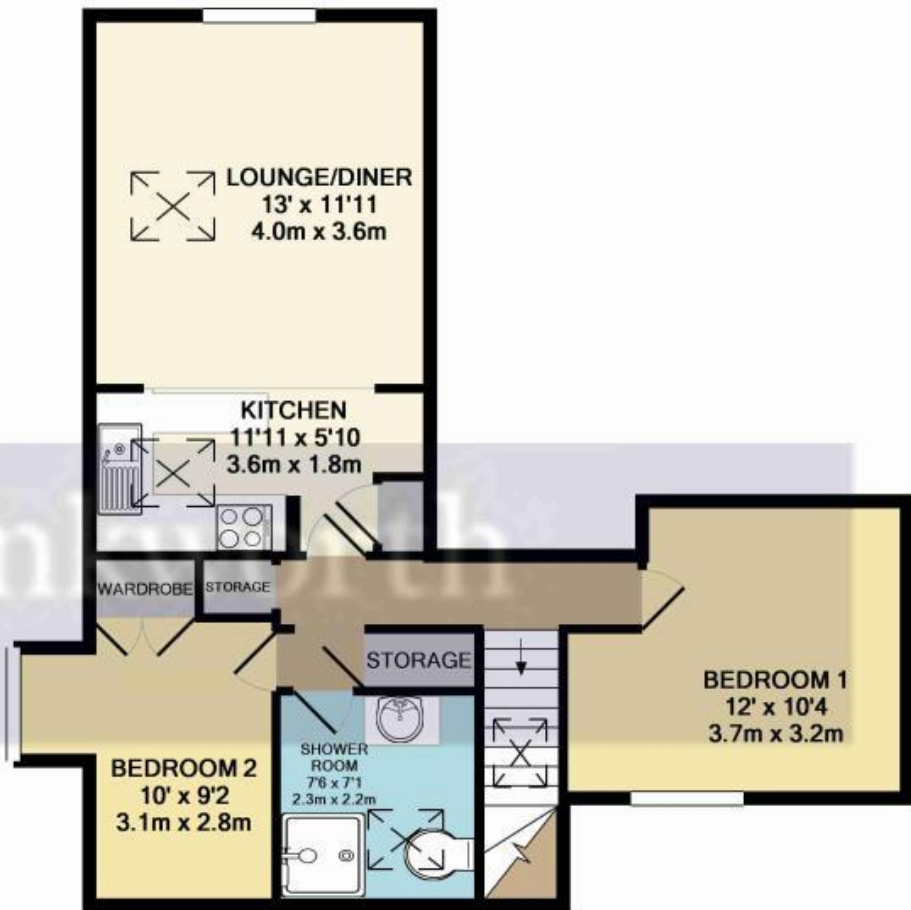
- Located in East Reading
- Two double bedrooms
- Large open plan living area
- Council tax band A
- Residents parking
- Available 1st November
- Unfurnished







1ST FLOOR
APPROX. FLOOR
AREA 41 SQ.FT.
(3.8 SQ.M.)



2ND FLOOR
APPROX. FLOOR
AREA 556 SQ.FT.
(51.6 SQ.M.)

TOTAL APPROX. FLOOR AREA 597 SQ.FT. (55.4 SQ.M.)

Whilst every attempt has been made to ensure the accuracy of the floor plan contained here, measurements of doors, windows, rooms and any other items are approximate and no responsibility is taken for any error, omission, or mis-statement. This plan is for illustrative purposes only and should be used as such by any prospective purchaser. The services, systems and appliances shown have not been tested and no guarantee as to their operability or efficiency can be given.
Made with Metropix ©2016

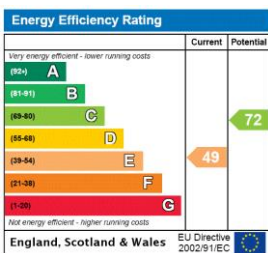
This floorplan is for illustration purposes only and is not to scale. The position and size of doors, windows, appliances and other features are approximate.

Deposit: £1,384.62

Holding Deposit: £276.92

Council Tax Band: A

Where no figures are shown, we have been unable to ascertain the information. All figures that are shown were correct at the time of printing.



Reading | 0118 4022 300 | reading@winkworth.co.uk



for every step...

winkworth.co.uk

Winkworth wishes to inform prospective buyers and tenants that these particulars are a guide and act as information only. All our details are given in good faith and believed to be correct at the time of printing but they don't form part of an offer or contract. No Winkworth employee has authority to make or give any representation or warranty in relation to this property. All fixtures and fittings, whether fitted or not are deemed removable by the vendor unless stated otherwise and room sizes are measured between internal wall surfaces, including furnishings.