

ROCHESTER ROW, SW1P

£975,000

LEASEHOLD

At a glance...

- Large Private Terrace
- Split-Level
- Modern bathroom
- Two Double Bedrooms
- Own front door
- WC

Winkworth

for every step...



Energy Efficiency Rating		
	Current	Potential
Very energy efficient - lower running costs		
(92+) A		
(81-91) B		
(69-80) C		
(55-68) D	68	78
(39-54) E		
(21-38) F		
(1-20) G		
Not energy efficient - higher running costs		
England, Scotland & Wales	EU Directive 2002/91/EC	

ROCHESTER ROW, SW1P

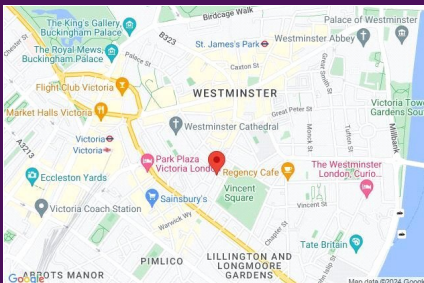
£975,000

LEASEHOLD

A well located, two bedroom, split level apartment on Rochester Row, SW1P, spanning across 955 sq ft. The first floor comprises of a spacious, light and bright reception room to the front with shutters, a large eat in kitchen with access out onto the South- West facing, decked terrace and a WC.

The second floor comprises of two good sized double bedrooms and a modern family bathroom with shower over bath, storage underneath and above the sink and a heated towel rail.

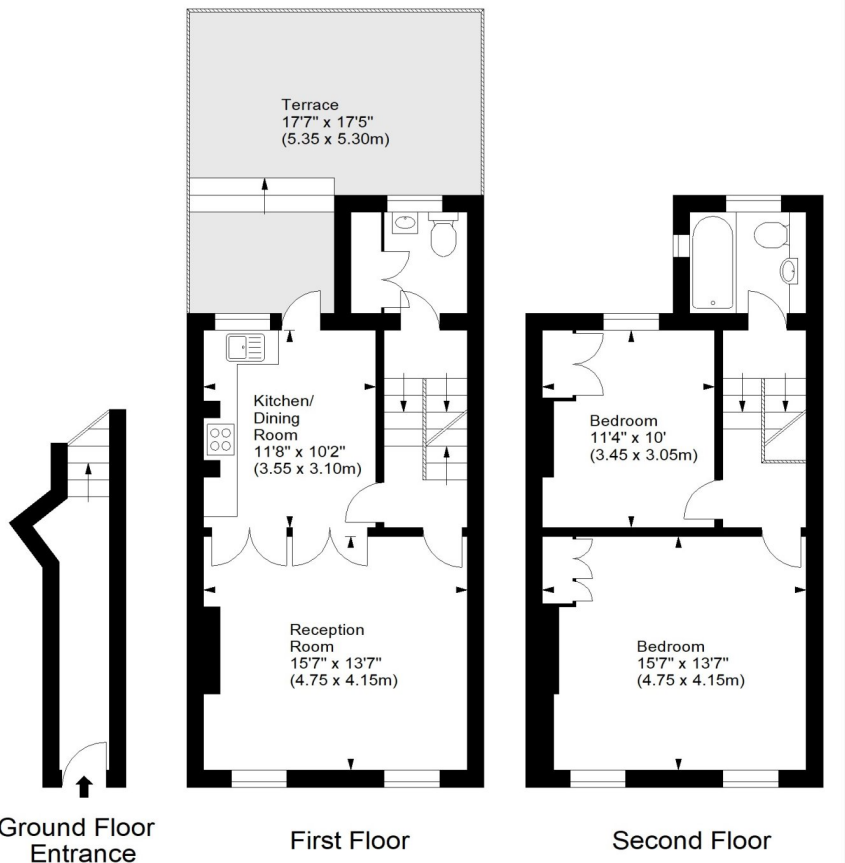
The property further benefits from it's own front door, secondary glazing to the front and being only moments away a selections of cafes, bars and restaurants of Pimlico and Victoria. Transport links can be found via Victoria (0.4 miles) and Pimlico (0.6 miles - Victoria Line).



winkworth wishes to inform prospective buyers and tenants that these particulars are a guide and act as information only. All our details are given in good faith and believed to be correct at the time of printing but they don't form part of an offer or contract. No winkworth employee has authority to make or give any representation or warranty in relation to this property. All fixtures and fittings, whether fitted or not are deemed removable by the vendor unless stated otherwise and room sizes are measured between internal wall surfaces - including fire-chimneys.

Rochester Row, SW1

Approx. Gross Internal Area
955 Sq Ft - 88.72 Sq M



For illustration purposes only. Not to scale.
All measurements are taken and shown at floor level.
www.r3photography.co.uk © Photography / Floor Plans / Lease Plans / EPCs



Pimlico & Westminister

020 7828 1786

pimlico@winkworth.co.uk

winkworth.co.uk/pimlico-westminister

Winkworth

for every step...