



**PINEHURST COURT, W11**  
**£425 PER WEEK (£1,841.66 PCM) FURNISHED**

**A BEAUTIFULLY PRESENTED AND INTERIOR DESIGNED STUDIO FLAT  
DESIGNED AND REFURBISHED TO THE HIGHEST OF STANDARDS ON THE  
FOURTH FLOOR (WITH LIFT) OF THIS POPULAR BLOCK IN THE HEART OF  
NOTTING HILL.**

**Notting Hill Lettings | 0207 727 3227 | nottinghill@winkworth.co.uk**

**Winkworth**

**for every step...**

*winkworth.co.uk*





### **DESCRIPTION:**

A beautifully presented and interior designed studio flat designed and refurbished to the highest of standards, located on the fourth floor (with lift) of this popular block in the heart of Notting Hill. Available fully furnished and viewings are highly recommended. Single occupants only and 12 months minimum term please.

### **LOCATION:**

Pinehurst court is on Colville Gardens, a pretty and quiet street just off Lonsdale Road and Colville terrace. A minutes' walk from Westbourne Grove and Portobello Road.

#### **Utilities:**

Electricity – Mains

Water – Mains

Sewerage – Mains

Heating – Gas

Broadband <https://checker.ofcom.org.uk/en-gb/broadband-coverage>

Mobile Coverage <https://checker.ofcom.org.uk/en-gb/mobile-coverage>

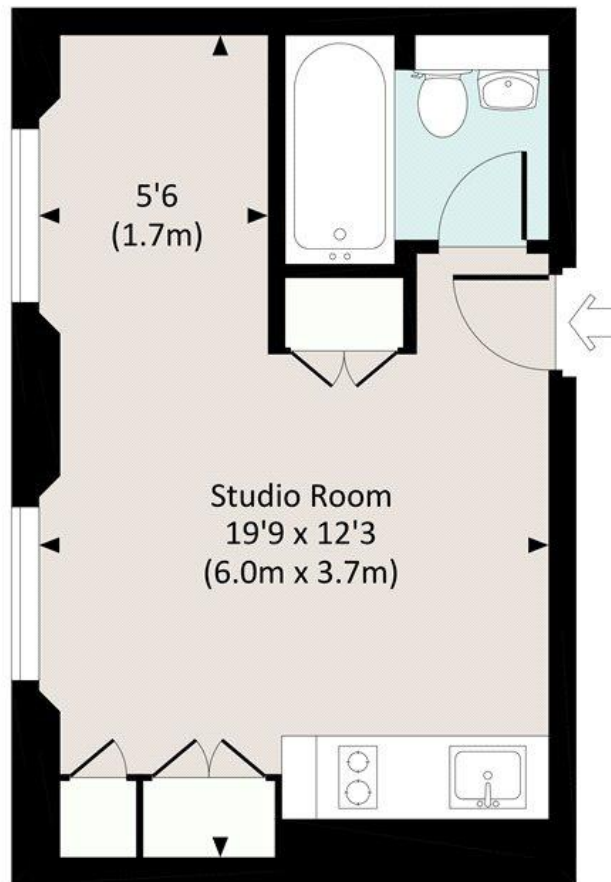






# PINEHURST COURT, W11

Approx. gross internal area  
242 Sq Ft. / 22.5 Sq M.

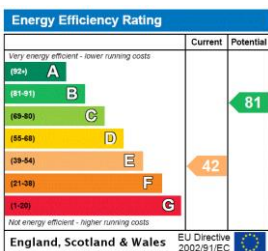


FOURTH FLOOR



All measurements have been made in accordance with RICS Code of Measuring Practice which are approximate only and only for illustrative purposes. For the avoidance of doubt, Dowling Jones Design shall not be liable for any reliance on these measurements. © 2019 www.dowlingjones.com 020 7610 9933

This floorplan is for illustration purposes only and is not to scale. The position and size of doors, windows, appliances and other features are approximate.



**Deposit:** £2,125

**Holding Deposit:** £425

**Council Tax Band:** B (RBKC)

Where no figures are shown, we have been unable to ascertain the information. All figures that are shown were correct at the time of printing.

Notting Hill Lettings | 0207 727 3227 | nottinghill@winkworth.co.uk

**Winkworth**

for every step...

[winkworth.co.uk](http://winkworth.co.uk)

Winkworth wishes to inform prospective buyers and tenants that these particulars are a guide and act as information only. All our details are given in good faith and believed to be correct at the time of printing but they don't form part of an offer or contract. No Winkworth employee has authority to make or give any representation or warranty in relation to this property. All fixtures and fittings, whether fitted or not are deemed removable by the vendor unless stated otherwise and room sizes are measured between internal wall surfaces, including furnishings.