



Avon Walk

Riverdene Basingstoke RG21 4DJ

Description

Being close to the town centre and railway station is extremely popular so we do not expect this large three bedroom house to 'hang around'. It has good size accommodation and is within easy walking distance of Festival Place. It also has a garage.

The ground floor has an open plan arrangement with a large living/dining room leading through to a decent size kitchen, which has plenty of storage space and work surfaces with a utility area at one end. There is a study area at the back and at the front, off the hallway is a cloakroom with a contemporary white suite.

Upstairs there are three bedrooms, two of which are 'doubles' with the third being a nice size 'single' and all of them have built-in wardrobes. The bathroom has a white suite.

To the rear there is a courtyard garden that has been fully paved and is enclosed with brick walls.



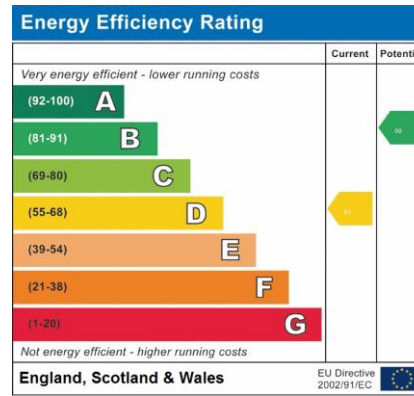
Winkworth

Accommodation

Downstairs cloakroom
 Living/dining room
 Study area
 Kitchen
 Three bedrooms
 Bathroom
 Courtyard garden
 Garage

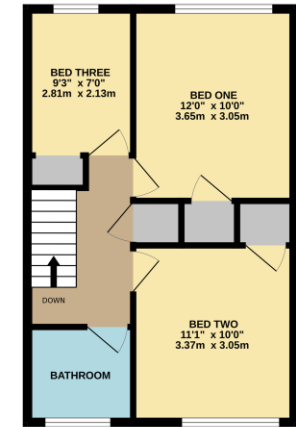
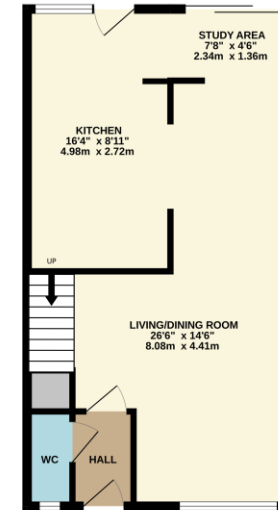
Leasehold details: Lease term is 999 years from 1964. The service charge is approximately £480 pa and the ground rent is £10.50 pa. These figures are supplied by the vendor and would need to be verified by Solicitors.

All details are given in good faith and are believed to be correct at time of printing. Winkworth give no representation as to their accuracy and potential purchasers or tenants must satisfy themselves by inspection or otherwise as to their correctness. No employee of Winkworth has authority to make or give any representation or warranty in relation to this property.



GROUND FLOOR
 514 sq. ft. (47.7 sq. m.) approx.

1ST FLOOR
 428 sq. ft. (39.7 sq. m.) approx.



TOTAL FLOOR AREA: 941 sq. ft. (87.4 sq. m.) approx.
 Whilst every attempt has been made to ensure the accuracy of the floorplans contained here, measurements of doors, windows, stairs and any other items are approximate and the responsibility is taken for any error, omission or mis-statement. This plan is for illustrative purposes only and should be used as such by any prospective purchaser. The correct, options and appliances shown here will be listed and no guarantee as to their operability or efficiency can be given.
 Made with Metreapp ©2022



Basingstoke Office

10B Church Street, Basingstoke, Hampshire, RG21 7QE
 01256 811730 | basingstoke@winkworth.co.uk

winkworth.co.uk/Basingstoke



See things differently.