



HILEY ROAD, NW10
£2,250 PER MONTH FURNISHED

**PRESENTING THIS STUNNING SPLIT LEVEL TWO
BEDROOM CONVERSION WHICH IS LOCATED IN THE
HEART OF THE KENSAL TRIANGLE.**

Kensal Rise & Queens Park | 0208 960 4947 | kensalrise@winkworth.co.uk

Winkworth

for every step...

winkworth.co.uk



DESCRIPTION:

Comprising of two spacious double bedrooms which are on slit levels and one with a small balcony, a large family bathroom, modern en suite shower room and stunning open plan kitchen reception. This apartment oozes character and charm and is sure to generate a lot of interest .

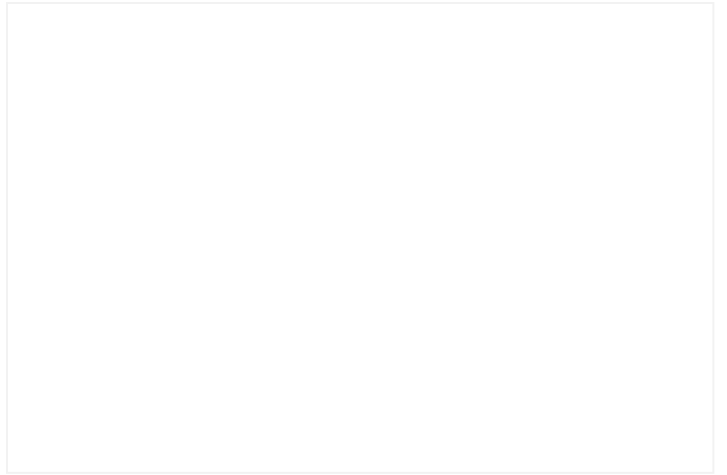
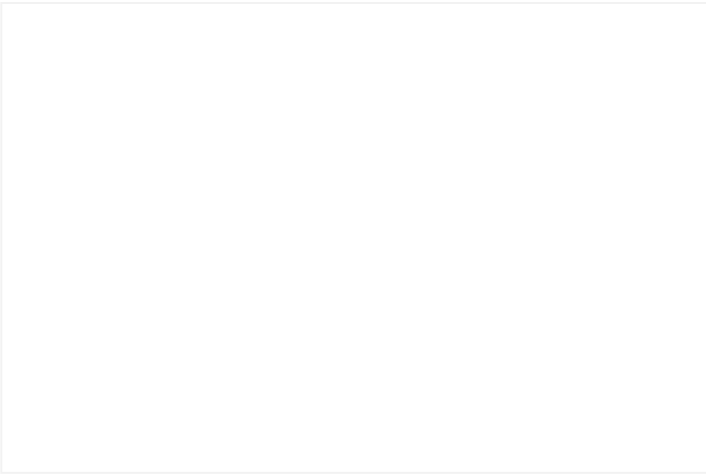
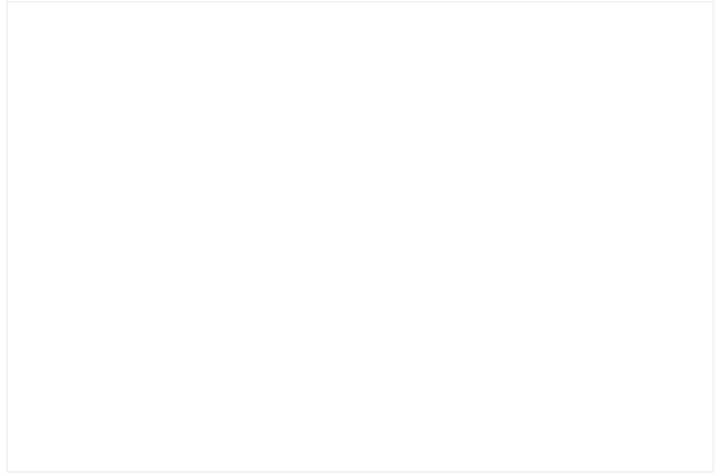
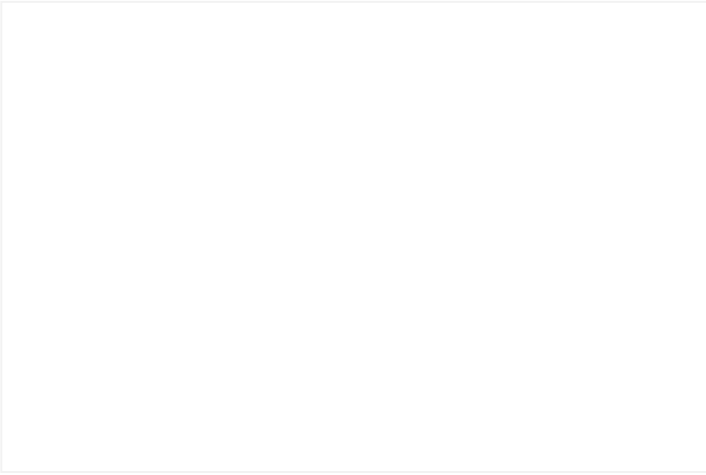
Additional features include a private balcony, hard wood flooring, fantastic location and ample storage.

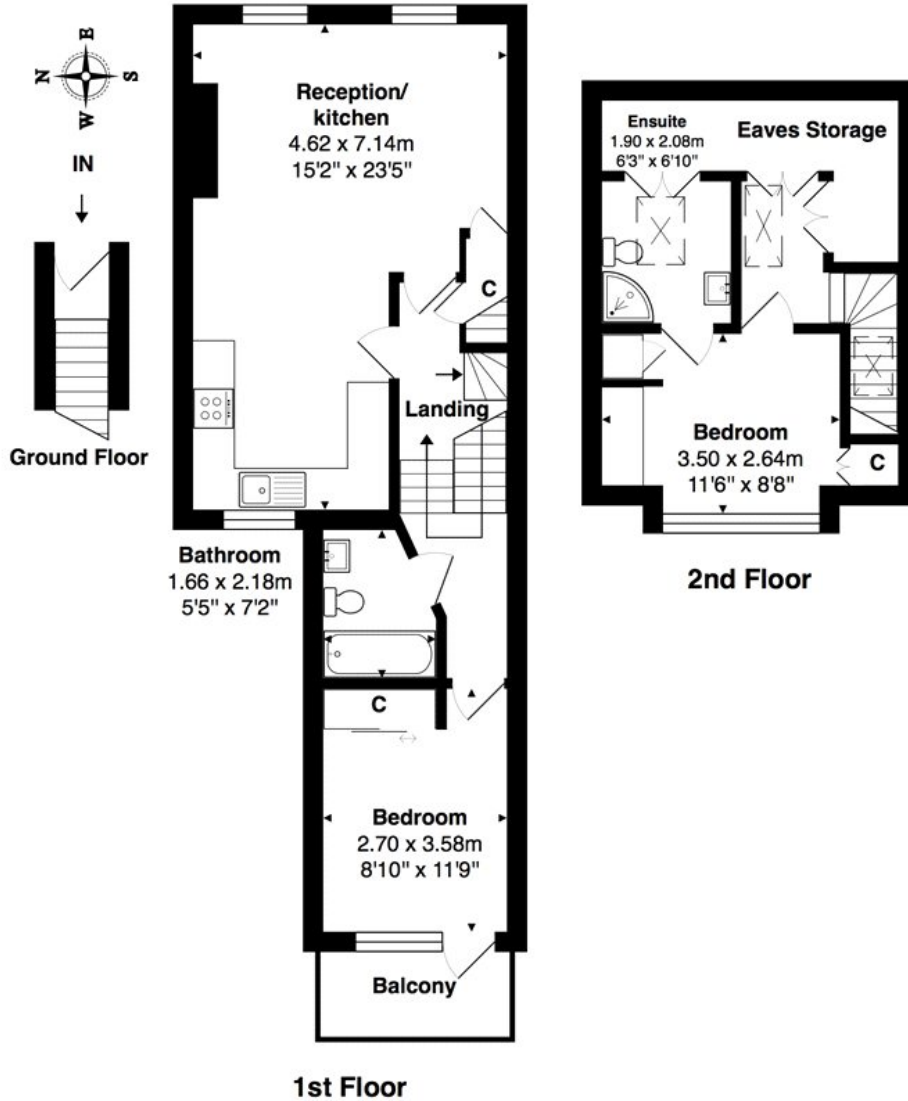
Offered Furnished

Managed By Winkworth

Council tax - (Band D)

Ward - Kensal Green





Total Area: 72.2 m² ... 778 ft² (excluding balcony, eaves storage)

All measurements are approximate and for display purposes only

This floorplan is for illustration purposes only and is not to scale. The position and size of doors, windows, appliances and other features are approximate.

Energy Efficiency Rating		Current	Potential
Very energy efficient - lower running costs			
(92-100)	A		
(81-91)	B		
(69-80)	C		
(55-68)	D	66	72
(39-54)	E		
(21-38)	F		
(1-20)	G		
Not energy efficient - higher running costs			
England, Scotland & Wales			
EU Directive 2002/91/EC			

Deposit: 5 weeks

Holding Deposit: 1 week

Council Tax Band: D

Where no figures are shown, we have been unable to ascertain the information. All figures that are shown were correct at the time of printing.

Kensal Rise & Queens Park | 0208 960 4947 | kensalrise@winkworth.co.uk



for every step...

winkworth.co.uk

Winkworth wishes to inform prospective buyers and tenants that these particulars are a guide and act as information only. All our details are given in good faith and believed to be correct at the time of printing but they don't form part of an offer or contract. No Winkworth employee has authority to make or give any representation or warranty in relation to this property. All fixtures and fittings, whether fitted or not are deemed removable by the vendor unless stated otherwise and room sizes are measured between internal wall surfaces, including furnishings.