



GREVILLE ROAD, NW6 **£950,000 SHARE OF FREEHOLD**

A superb duplex apartment situated over the ground and lower ground floors of this imposing 19th Century House. The apartment has been completely refurbished throughout with exceptional attention to detail. It offers two large bedrooms, two bathrooms (both en-suite) plus guest cloakroom and a modern open plan living/dining area which leads to a private terrace. This apartment makes great use of natural light, space and well thought out design. Additional benefits include direct access to a beautifully maintained communal garden. Greville Road is ideally located on the borders of both St John's Wood and Maida Vale, 0.6 miles from Maida Vale Underground Station (Bakerloo Line) and 0.8 miles from St John's Wood underground station (Jubilee Line).

Primary Bedroom with En-Suite Bathroom | Further Bedroom with En-Suite Shower | Open Plan Kitchen /Reception Room | Guest Cloakroom | Private Patio | Communal Garden | Share of Freehold

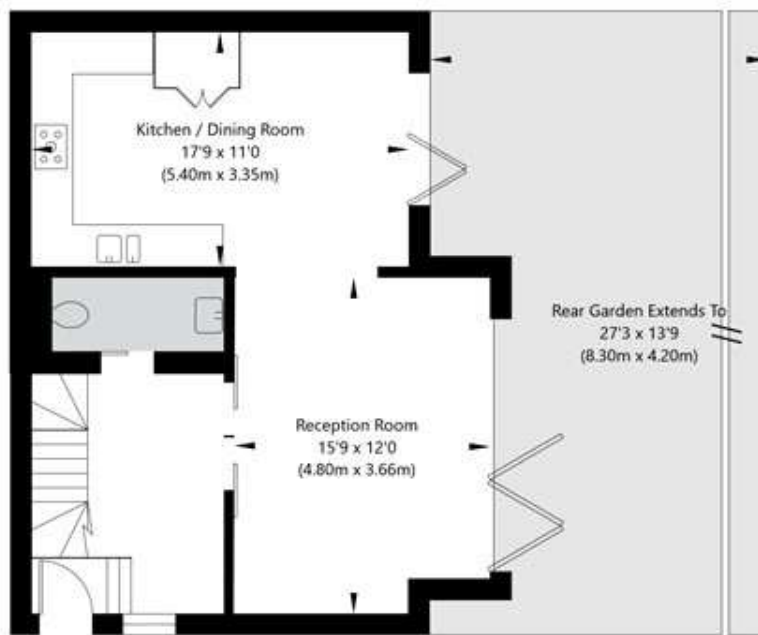
Winkworth

for every step...

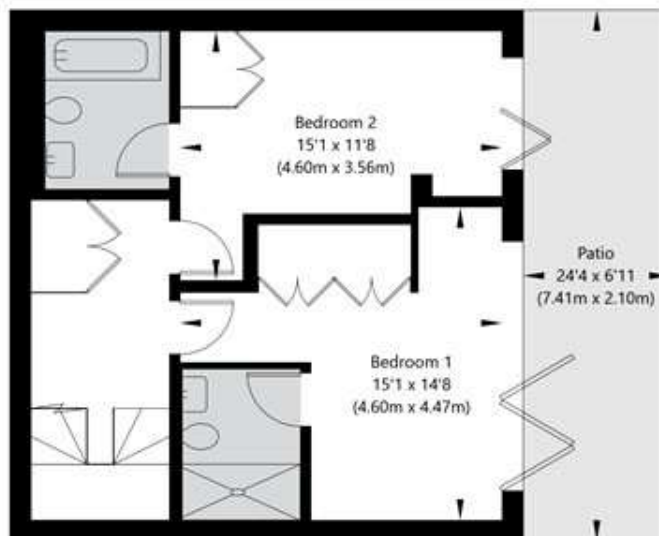
[winkworth.co.uk/west-hampstead](https://www.winkworth.co.uk/west-hampstead)



Greville Road, London, NW6 5JA

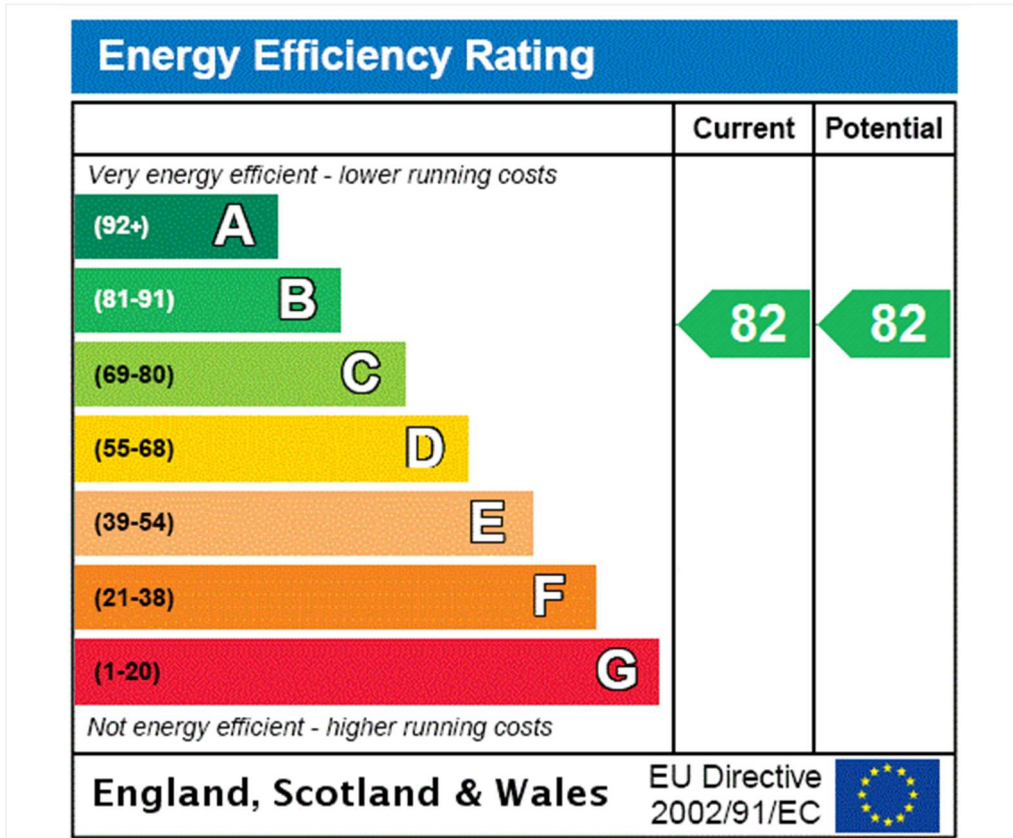


Ground Floor
GROSS INTERNAL FLOOR AREA
APPROX. 49.77 SQ M / 536 SQ FT



Lower Ground Floor
GROSS INTERNAL FLOOR AREA
APPROX. 46.98 SQ M / 506 SQ FT

APPROXIMATE GROSS INTERNAL FLOOR AREA 96.75 SQ M / 1042 SQ FT
THIS FLOOR PLAN IS FOR ILLUSTRATIVE PURPOSES ONLY AND
SHOULD BE USED FOR THIS PURPOSE BY PROSPECTIVE APPLICANTS AS ITS NOT TO SCALE.



Tenure: Share of Freehold

Term: Expires - 22/03/3019

Service Charge: £2,208.94 per annum

Ground Rent: Peppercorn

Council Tax Band: E

Where no figures are shown, we have been unable to ascertain the information. All figures that are shown were correct at the time of printing.

Where no figures are shown, we have been unable to ascertain the information. All figures that are shown were correct at the time of printing. These particulars are not an offer or contract, nor part of one. You should not rely on statements by Winkworth in the particulars or by word of mouth or in writing "information" as being factually accurate about the property, its condition or its value. Winkworth does not have any authority to make any representations about the property, and accordingly any information given is entirely without responsibility on the part of the agents, seller(s) or lessor(s). These particulars are prepared on the basis of the information supplied by our client and are a rough guide for information only. The photographs show only certain parts of the property. We are not able to check all of the information and therefore are unable to guarantee accuracy. All interested parties are therefore advised to undertake all necessary inspections and checks that they deem appropriate. Where displayed, the square footage is taken from the floor plans, which are created by an independent supplier. These measurements are approximate and included for illustrative purposes only. The measurements may vary. Winkworth does not make any representation as to the accuracy of these measurements and you should seek to verify them for yourself. Winkworth accept no liability for any loss you may suffer if you rely on these measurements. All fixtures and fittings, whether fitted or not are deemed removable by the vendor unless stated. Any reference to alterations to, or use of, any part of the property does not mean that any necessary planning, building regulations or other consent has been obtained. Amenities and appliances have not been tested

West Hampstead | 142 West End Lane, London, NW6 1SD | 020 7483 7602 |

westhampstead@winkworth.co.uk

winkworth.co.uk/west-hampstead



for every step...

Winkworth wishes to inform prospective buyers and tenants that these particulars are a guide and act as information only. All our details are given in good faith and believed to be correct at the time of printing but they don't form part of an offer or contract. No Winkworth employee has authority to make or give any representation or warranty in relation to this property. All fixtures and fittings, whether fitted or not are deemed removable by the vendor unless stated otherwise and room sizes are measured between internal wall surfaces, including furnishings.