



Churchill Gardens, SW1V

£2,050 PER MONTH

FURNISHED


AT A GLANCE

- Heating and Hot water included
- Well equipped kitchen
- One bedroom
- 7th floor
- Lift access

Winkworth

for every step...



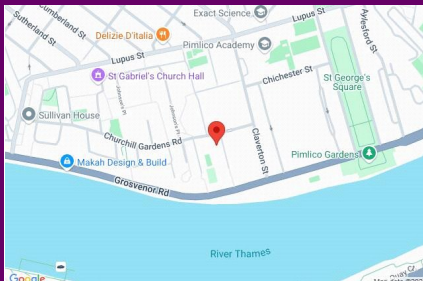
Energy Efficiency Rating		
	Current	Potential
Very energy efficient - lower running costs		
(92+) A		
(81-91) B		
(69-80) C		
(55-68) D		
(39-54) E		
(21-38) F		
(1-20) G		
Not energy efficient - higher running costs		
	69	76
England, Scotland & Wales	EU Directive 2002/91/EC 	

CHURCHILL GARDENS, SW1V

£2,050 PER MONTH
FURNISHED

A well located, one bedroom flat in Churchill Gardens with lift access. The flat is super light throughout and comprises of a well equipped kitchen with plenty of worktop space, a family bathroom with shower over bath, a spacious double bedroom with inbuilt storage and a beautiful living room with spectacular views across Battersea Power Station. The property is offered on a furnished basis and rent includes Hot water and Heating.

Situated within moments of the superb selection of local shops, cafes and restaurants on Lupus Street, the 'Moreton Triangle' and Wilton Road. The extensive collection of retail outlets and theatres at nearby Victoria are also within walking distance as are the green open spaces of St George's Square and Battersea Park.

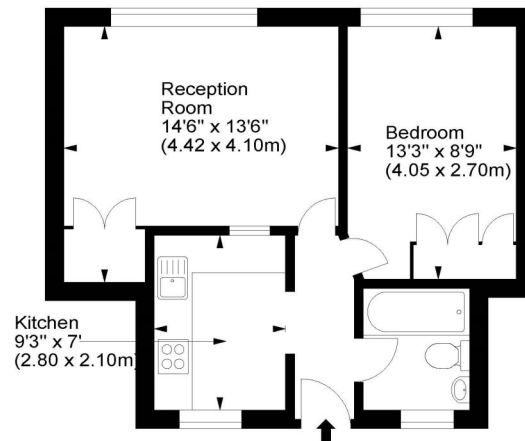


winkworth wishes to inform prospective buyers and tenants that these particulars are a guide and act as information only. All our details are given in good faith and believed to be correct at the time of printing but they don't form part of an offer or contract. No winkworth employee has authority to make or give any representation or warranty in relation to this property. All fixtures and fittings, whether fitted or not are deemed removable by the vendor unless stated otherwise and room sizes are measured between internal wall surfaces, including fireplaces.

Keats House, SW1



Approx. Gross Internal Area
433 Sq Ft - 40.23 Sq M



Seventh Floor

For illustration purposes only. Not to scale.
All measurements are taken and shown at floor level.
www.r3photography.co.uk © Photography / Floor Plans / Lease Plans / EPCs



Pimlico & Westminster | 020 7828 1786 |
pimlico@winkworth.co.uk

winkworth.co.uk/pimlico

Winkworth

for every step...