



MORTIMER ROAD, LONDON, NW10

£449,000 LEASEHOLD

A FANTASTIC TWO BEDROOM FIRST FLOOR APARTMENT IN THIS GREAT LOCATION CLOSE TO BOTH COLLEGE AND CHAMBERLAYNE ROAD, AS WELL AS BEING A SHORT WALK TO KENSAL GREEN STATION.

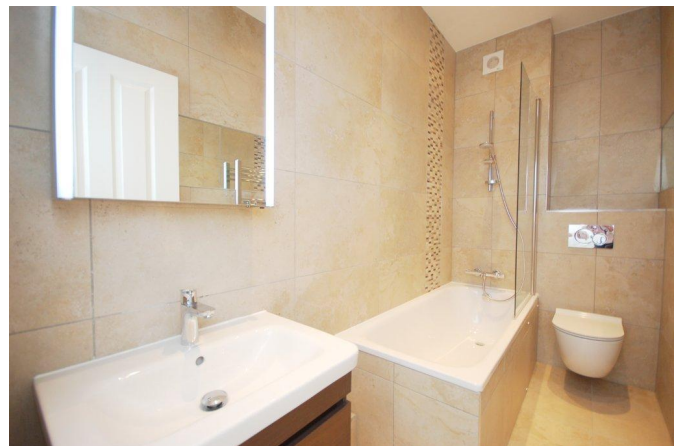
Kensal Rise & Queens Park | 0208 960 4947 | kensalrise@winkworth.co.uk





LOCATION:

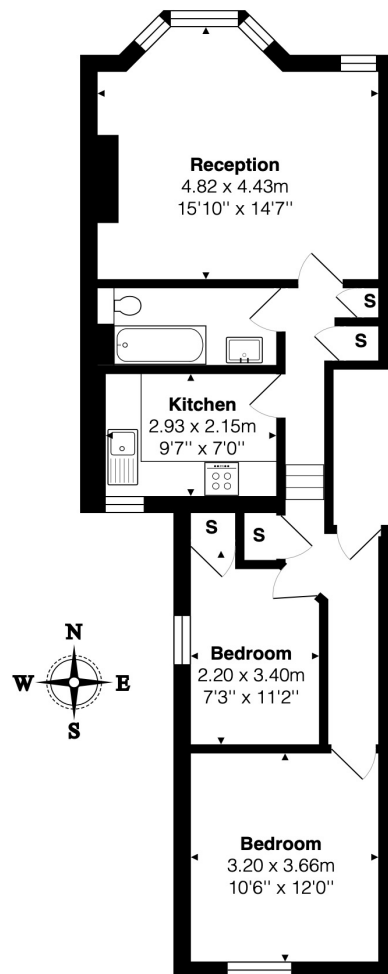
Mortimer Road is a fantastic and popular location for its transport links at Kensal Green Station (Bakerloo Line and Overground). The amenities of both College Road and Chamberlayne Road are a short walk away, offering favourites The Island Gastropub, Sonora Café, L'Angolo Italian Deli and The Chamberlayne. Queens Park itself is also within easy access.



DESCRIPTION:

Set within a period Victorian conversion, we are pleased to offer this two bedroom, first floor flat, centrally located in Kensal Rise. The flat comprises of a spacious full width front reception and dining room with large sash bay window, separate modern handle less kitchen, fully tiled three piece main bathroom suite, and two bedrooms. Overall, the flat is great order and is offered with no upper-chain.

Viewing comes highly recommended.



Total Area: 60.7 m² ... 653 ft²

All measurements are approximate and for display purposes only

Kensal Rise & Queens Park | 0208 960 4947 | kensalrise@winkworth.co.uk

Winkworth

winkworth.co.uk

See things differently

winkworth wishes to inform prospective buyers and tenants that these particulars are a guide and act as information only. All our details are given in good faith and believed to be correct at the time of printing but they don't form part of an offer or contract. No winkworth employee has authority to make or give any representation or warranty in relation to this property. All fixtures and fittings, whether fitted or not are deemed removable by the vendor unless stated otherwise and room sizes are measured between internal wall surfaces, including furnishings.