



ELIOT HILL, LEWISHAM, LONDON, SE13 7EB
£650,000 SHARE OF FREEHOLD

OCCUPYING THE PRESTIGIOUS RAISED GROUND (HALL) FLOOR OF THIS IMPRESSIVE SEMI-DETACHED VICTORIAN HOUSE LOCATED JUST OFF THE HEATH AND CLOSE TO THE STATION AND DLR, IS THIS LARGE TWO DOUBLE BEDROOM APARTMENT SPANNING 877 SQ.FT.

Blackheath | 0208 8520999 | blackheath@winkworth.co.uk





DESCRIPTION:

The accommodation comprises; a huge and elegant 22'4 x 14'10 reception room with bay window and open to a separate modern kitchen. A very large 15'3 x 14'9 master bedroom boasts built in wardrobes, there is a second bedroom also with built in wardrobes, and a stylish modern shower room. To the rear is a large communal garden.

The property is in excellent decorative order with very high ceilings, sash windows, shutters, ornate corning, period fireplaces, wood flooring and gas fired central heating with feature radiators. .

This is an impressive apartment and is sold with a share of the freehold. Early viewing is highly recommended.

Eliot Hill is a sought after road located on the edge of the heath and the ideal location to take advantage of local amenities in almost all directions. Walking east, just 0.64 miles, you will arrive in Blackheath village which offers an array of boutique shops, bars and restaurants giving a genuine feeling of village life inside London. 0.69 miles to the north you will find the historic Greenwich town centre and Royal Greenwich Park is just 740 metres away. Finally to the south, the convenience of Lewisham Station's over ground and DLR service is only 0.26 miles. The property is also close to both All Saints and John Ball Primary Schools.

BY RAIL . DLR - Lewisham - 0.26 miles. Underground - North Greenwich - Jubilee line - 2.46 miles. British Rail - Lewisham 0.3 miles/ Blackheath - 0.67 miles.

Journey times from Lewisham: London Bridge - 12 minutes Cannon Street - 18 minutes Victoria - 24 minutes Charing Cross - 21 minutes

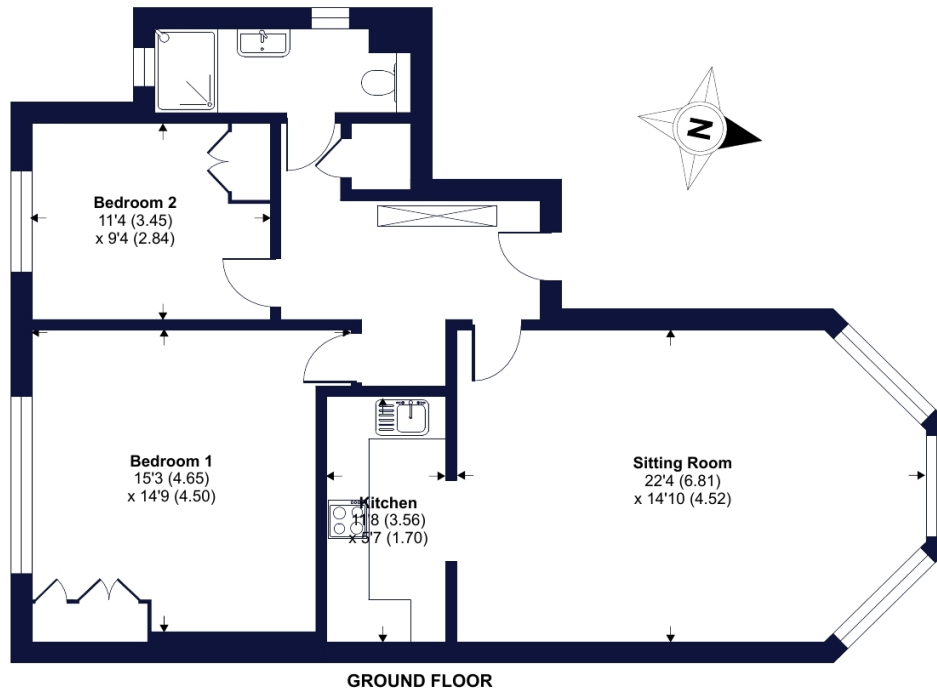




Eliot Hill, London, SE13

Approximate Area = 877 sq ft / 81.5 sq m

For identification only - Not to scale



This floor plan should be used as a general outline for guidance only. Any intending purchaser or lessee should satisfy themselves by inspection searches, enquiries, and full survey as to the correctness of each statement. Any areas, measurements or distances quoted are approximate and should not be used to value a property or be the basis of any sale or let. Floor plan produced in accordance with RICS Property Measurement Standards incorporating International Property Measurement Standards (IPMS2 Residential). ©nlcheom 2023. Produced for Winkworth. REF: 1124413

Winkworth

This floorplan is for illustration purposes only and is not to scale. The position and size of doors, windows, appliances and other features are approximate. Any lease and service charge details have been provided by the vendor. Any interest party should have these checked by a solicitor as part of the purchase process.

Blackheath | 0208 8520999 | blackheath@winkworth.co.uk

Winkworth

winkworth.co.uk

See things differently

Winkworth wishes to inform prospective buyers and tenants that these particulars are a guide and act as information only. All our details are given in good faith and believed to be correct at the time of printing but they don't form part of an offer or contract. No Winkworth employee has authority to make or give any representation or warranty in relation to this property. All fixtures and fittings, whether fitted or not are deemed removable by the vendor unless stated otherwise and room sizes are measured between internal wall surfaces, including furnishings.