



## Westminster Gardens, SW1P

£7,583.33 PER MONTH

FURNISHED

### AT A GLANCE

- Two Bedrooms
- Two Bathrooms
- Separate W/C
- Off-street Parking
- Concierge
- Council Tax Band: G

**Winkworth**

for every step...



Energy Efficiency Rating		
	Current	Potential
Very energy efficient - lower running costs		
(92+) <b>A</b>		
(81-91) <b>B</b>		
(69-80) <b>C</b>		
(55-68) <b>D</b>		
(39-54) <b>E</b>		
(21-38) <b>F</b>		
(1-20) <b>G</b>		
Not energy efficient - higher running costs		
<b>England, Scotland &amp; Wales</b>	EU Directive 2002/91/EC	

## WESTMINSTER GARDENS, SW1P

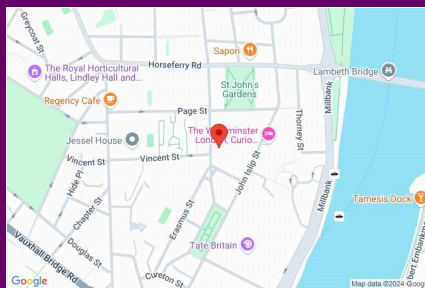
£7,583.33 PER MONTH  
FURNISHED

A stunning, two bedroom, two bathroom apartment located in the highly desirable mansion block of Westminster Gardens.

The high spec flat spans across 1363 sq ft, and comprises of a double reception with access to a Juliet balcony, a large dining table, speakers and mounted TV. A fully integrated kitchen with all white goods, five ring hob and granite worktops.

The master bedroom benefits from ample bespoke wardrobes and is located just next door to the marble family bathroom, with rainfall shower over bath and a grand double vanity unit with undersink storage. The second bedroom is also of a generous size and benefits from access to a modern ensuite and study area.

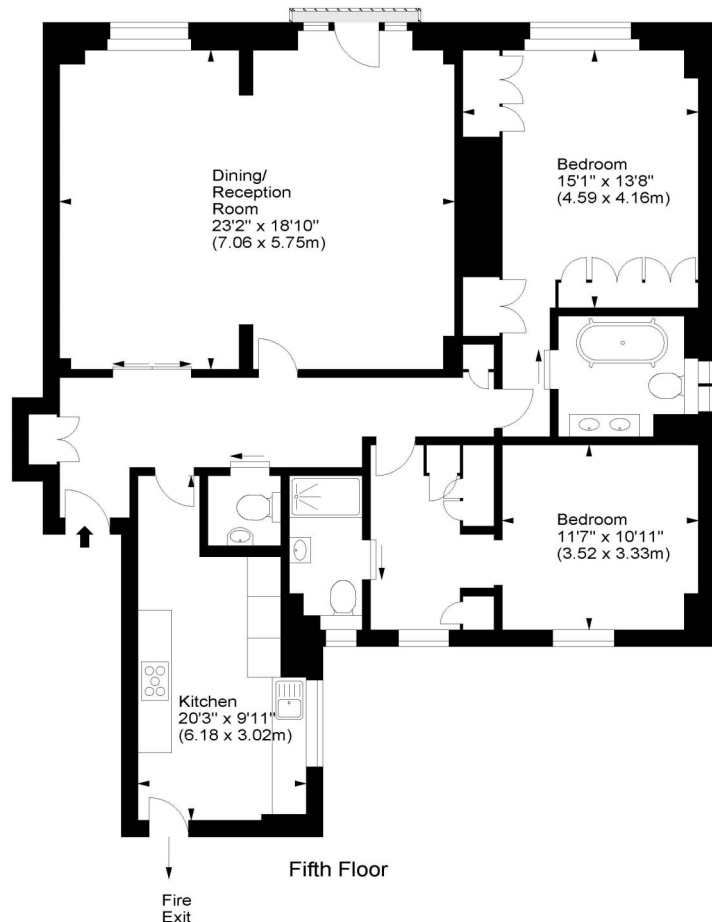
The apartment further benefits from a WC, storage, lift access, communal roof



winkworth wishes to inform prospective buyers and tenants that these particulars are a guide and act as information only. All our details are given in good faith and believed to be correct at the time of printing but they don't form part of an offer or contract. No winkworth employee has authority to make or give any representation or warranty in relation to this property. All fixtures and fittings, whether fitted or not are deemed removable by the vendor unless stated otherwise and room sizes are measured between internal wall surfaces - including fire doors.

### Westminster Gardens, SW1

Approx. Gross Internal Area  
1363 Sq Ft - 126.62 Sq M



For illustration purposes only. Not to scale.  
All measurements are taken and shown at floor level.  
www.r3photography.co.uk © Photography / Floor Plans / Lease Plans / EPCs



Pimlico & Westminster | 020 7828 1786 |  
pimlico@winkworth.co.uk

winkworth.co.uk/pimlico

**Winkworth**

for every step...