



HURON ROAD, SW17
OIEO £450,000 SHARE OF FREEHOLD

A BRIGHT ONE BEDROOM FIRST FLOOR FLAT.

Tooting | 020 8767 5221 | tooting@winkworth.co.uk

Winkworth

for every step...

winkworth.co.uk



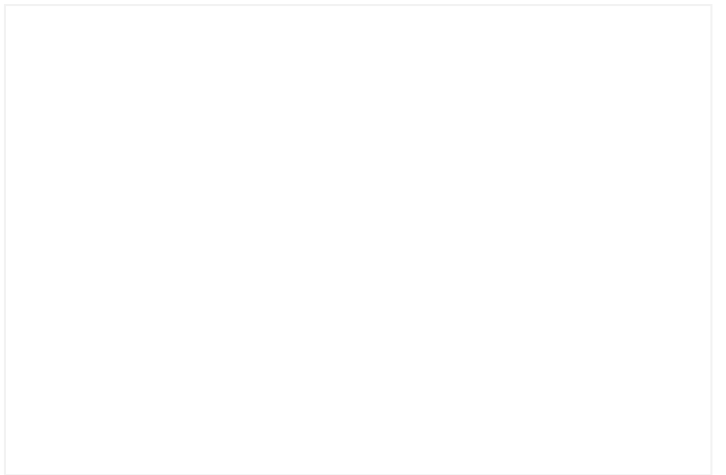
DESCRIPTION:

Upon entering, this charming one-bedroom, first-floor split-level flat offers a bright and spacious reception room, a separate kitchen, and a staircase leading to a generously sized double bedroom and a well-appointed bathroom.

Huron Road is situated in the highly desirable and sought-after Heaver Estate Area, celebrated for its charming Victorian and Edwardian homes. The property enjoys a prime location within easy walking distance of the expansive green spaces of both Tooting Common and Wandsworth Common, offering plenty of opportunities for outdoor leisure.

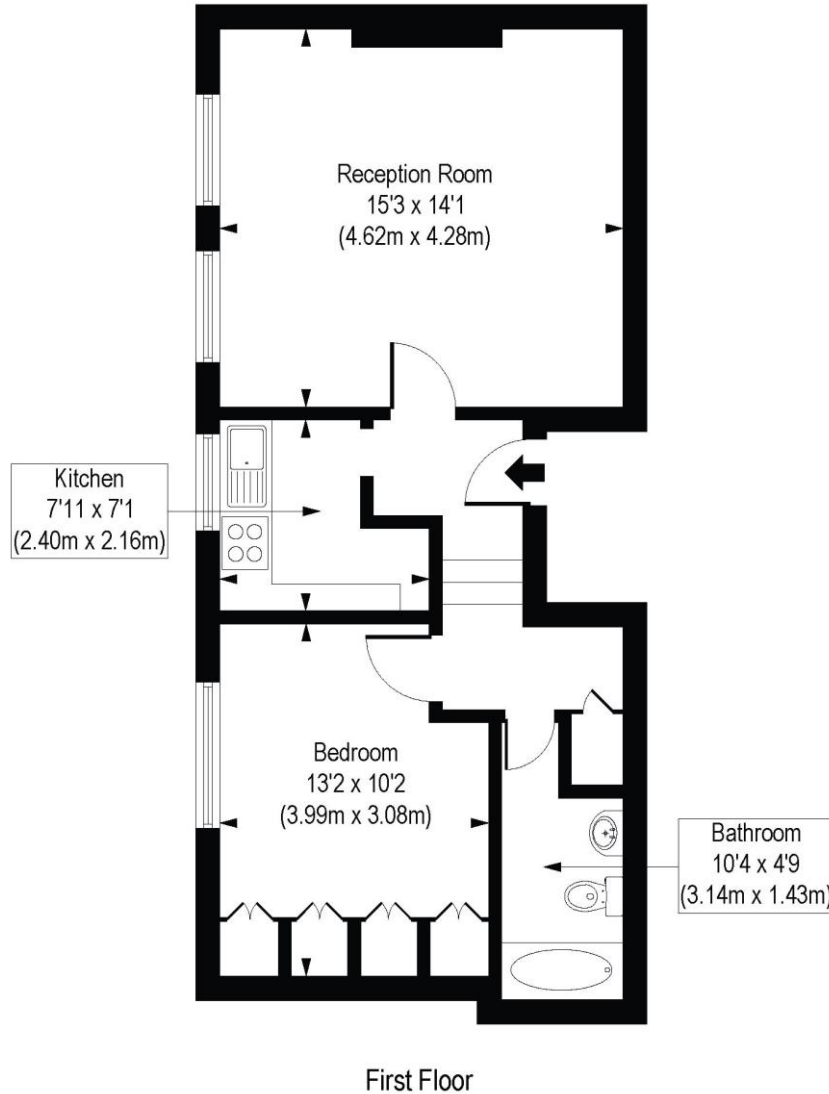
The bustling Balham High Road is nearby, providing a variety of shops, cafes, and restaurants. For excellent transport links, residents have access to Tooting Bec Underground Station (Northern Line) as well as the Balham overground and underground stations, ensuring seamless connectivity to central London and beyond.

Wandsworth Council Tax Band: C



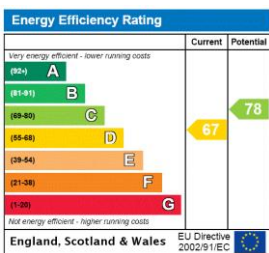
Huron Road, SW17

Approx. Gross Internal Floor Area 507 sq. ft / 47.08 sq. m



COMPLIANT WITH BIC'S CODE OF MEASURING PRACTICE. Floorplan is for illustrative purposes only and is not to scale. Every attempt has been made to ensure the accuracy of the floorplan shown, however all measurements, fixtures, fittings and data shown are an approximate interpretation for illustrative purposes only. Liability for errors, omissions or mis-statement through negligence or otherwise is hereby excluded.

This floorplan is for illustration purposes only and is not to scale. The position and size of doors, windows, appliances and other features are approximate.



Tooting | 020 8767 5221 | tooting@winkworth.co.uk

for every step...

winkworth.co.uk

Winkworth wishes to inform prospective buyers and tenants that these particulars are a guide and act as information only. All our details are given in good faith and believed to be correct at the time of printing but they don't form part of an offer or contract. No Winkworth employee has authority to make or give any representation or warranty in relation to this property. All fixtures and fittings, whether fitted or not are deemed removable by the vendor unless stated otherwise and room sizes are measured between internal wall surfaces, including furnishings.