



WENTWORTH ROAD, GOLDERS GREEN, NW11  
£1,400,000 FREEHOLD

**A TRULY STUNNING, NEWLY UPDATED FOUR-BEDROOM, THREE BATHROOM DETACHED FAMILY HOME IN A POPULAR LOCATION**

Golders Green | 020 8458 8313 | goldersgreen@winkworth.co.uk

**Winkworth**

for every step...

*winkworth.co.uk*



## DESCRIPTION:

A truly stunning, newly updated four-bedroom, three bathroom detached family home in a popular location within close proximity to Golders Green (Northern line) tube station and shopping at Temple Fortune's varied and thriving cafes and boutiques.

The house has been recently modernised to an extremely high standard by the current owners and comprises, on ground level, a large entrance hall with guest WC, spacious and bright open plan fully fitted integrated kitchen and living room with access out to a well-maintained garden. Situated on the first floor is a tiled family bathroom suite, three further double bedrooms and additional office/study bedroom with the second bedroom featuring an en-suite bathroom. The second floor comprises a large stunning master bedroom with fitted wardrobes and access to an additional en-suite bathroom.

Further benefits include German (Beckermann) Kitchen, under floor heating on ground level, air conditioning for all bedrooms, utility room, Italian wardrobes, ADT Alarm system and loft storage above the master bedroom. FREEHOLD

EPC - D

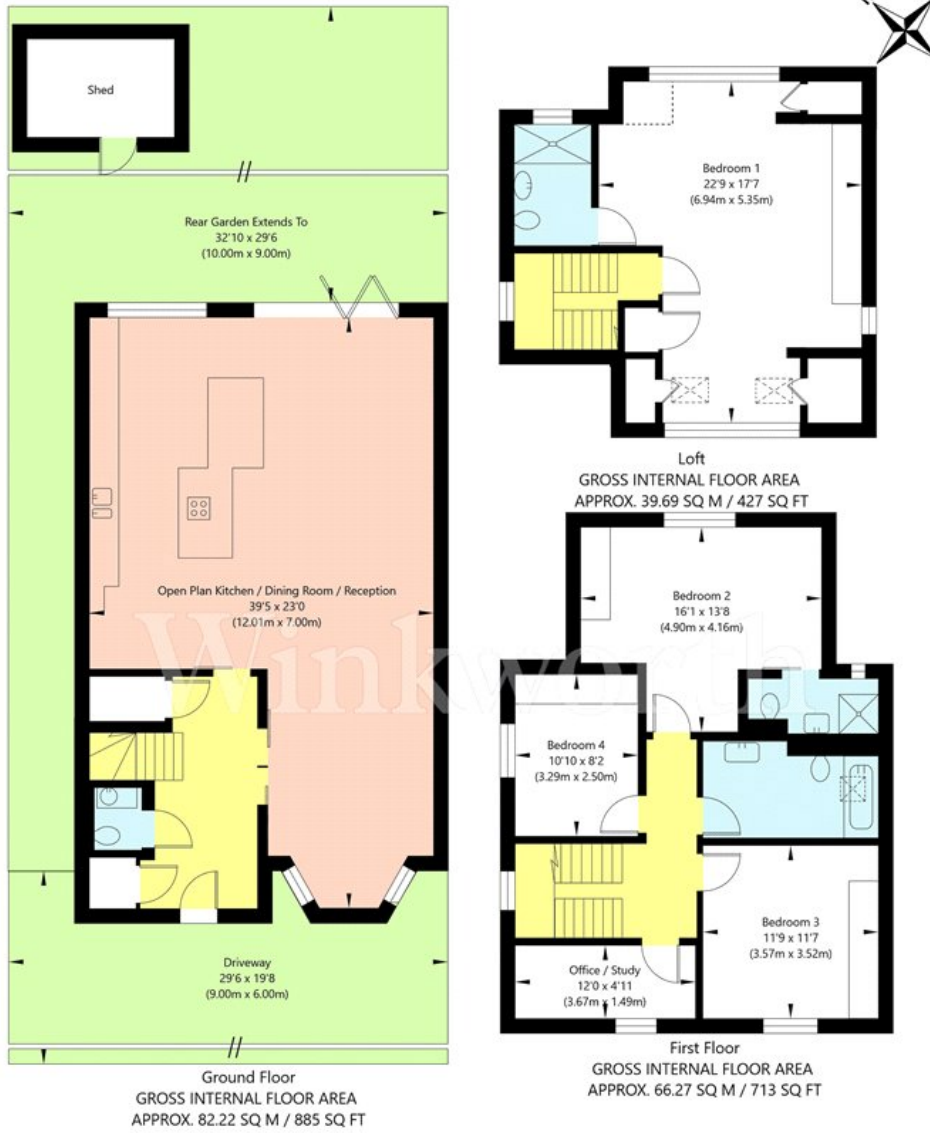
## AT A GLANCE

- STUNNING NEWLY UPDATED DETACHED HOUSE
- FOUR BEDROOMS 3 BATH PLUS STUDY
- OFF STREET PARKING
- WELL MAINTAINED GARDEN
- BECKERMANN KITCHEN
- FREEHOLD





Wentworth Road, London NW11 0RL



APPROXIMATE GROSS INTERNAL FLOOR AREA 188.18 SQ M / 2025 SQ FT  
THIS FLOOR PLAN IS FOR ILLUSTRATIVE PURPOSES ONLY AND  
SHOULD BE USED FOR THIS PURPOSE BY PROSPECTIVE APPLICANTS AS ITS NOT TO SCALE.

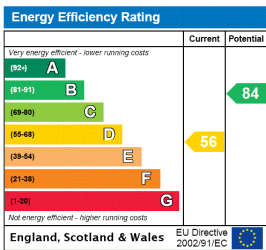
(c) AMBERSHORE PIX LIMITED / PHOTO - VIDEO - FLOOR PLANS / 0800 999 1577 / WWW.AMERSHOREPIX.CO.UK

This floorplan is for illustration purposes only and is not to scale. The position and size of doors, windows, appliances and other features are approximate.

**Tenure:** Freehold

**Council Tax Band:** F

Where no figures are shown, we have been unable to ascertain the information. All figures that are shown were correct at the time of printing.



Golders Green | 020 8458 8313 | goldersgreen@winkworth.co.uk



for every step...

winkworth.co.uk

Winkworth wishes to inform prospective buyers and tenants that these particulars are a guide and act as information only. All our details are given in good faith and believed to be correct at the time of printing but they don't form part of an offer or contract. No Winkworth employee has authority to make or give any representation or warranty in relation to this property. All fixtures and fittings, whether fitted or not are deemed removable by the vendor unless stated otherwise and room sizes are measured between internal wall surfaces, including furnishings.