



## Onslow Gardens, South Kensington, London, SW7

£800 per week\* / £3,46.67 per month – Furnished or Part Furnished

A fantastic two double bedroom flat on Onslow Gardens with views over gardens.

2 Bedrooms | 1 Reception Room | 2 Bathrooms | Third Floor Flat | Access to Communal Gardens (by separate arrangement) | 776 Approx sq ft | EPC: C

APPLICANT FEES MAY BE APPLICABLE  
DEPOSIT OF 5 WEEKS' RENT  
HOLDING DEPOSIT OF 1 WEEK'S RENT

**Winkworth**



## DESCRIPTION

A spacious two double bedroom apartment situated on the third floor of this elegant stucco fronted Victorian building in this premier South Kensington address.

The property is wonderfully light, with both kitchen and reception room offering large West-facing windows overlook the gated communal gardens to which the property enjoys access (by separate arrangement). Two double bedrooms are located at the front of the building and are serviced by two shower rooms (one en-suite).

The apartment is available immediately on a furnished or part-furnished basis.



## ACCOMMODATION

2 Bedrooms, 1 Reception Room,  
2 Bathrooms, Third Floor Flat, Access to  
Communal Garden (by separate  
arrangement), Furnished or Part-Furnished,  
776 Approx Sq ft

## COUNCIL TAX BAND

Band G



Energy Efficiency Rating		Current	Potential
Very energy efficient - lower running costs			
(92+)	<b>A</b>		
(81-91)	<b>B</b>		
(69-80)	<b>C</b>	<b>75</b>	<b>82</b>
(55-68)	<b>D</b>		
(39-54)	<b>E</b>		
(21-38)	<b>F</b>		
(1-20)	<b>G</b>		
Not energy efficient - higher running costs			
England, Scotland & Wales		EU Directive 2002/91/EC	

# ONslow GARDENS, SW7

APPROXIMATE GROSS INTERNAL AREA

777 Ft<sup>2</sup> - 72.18 M<sup>2</sup>

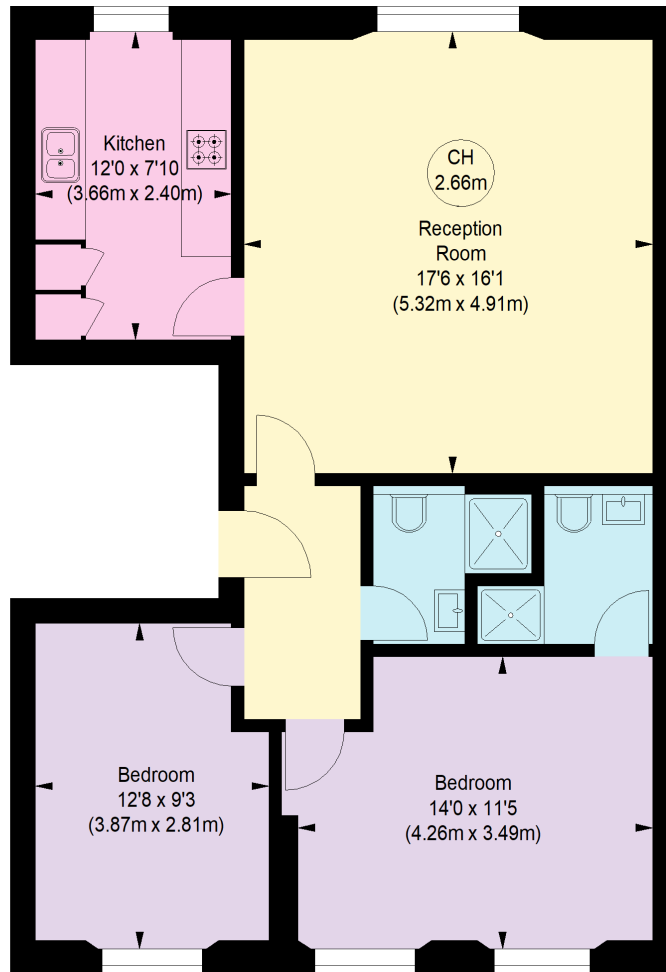
Illustration For Identification Only. Not To Scale.

All Calculations include Any/All Areas Under 1.5m Head Height.

\* As Defined by RICS - Code of Measuring Practice.

Key :

CH - Ceiling Height



**Winkworth**

THIRD FLOOR

*This floorplan is for illustration purposes only and is not to scale. The position and size of doors, windows, appliances and other features are approximate.*

*\*Please note, the rent cannot be paid on a weekly basis*

**Winkworth**

South Kensington Lettings | 020 7370 6767 | [lettings.southken@winkworth.co.uk](mailto:lettings.southken@winkworth.co.uk)

[winkworth.co.uk](http://winkworth.co.uk)

for every step...

Winkworth wishes to inform prospective buyers and tenants that these particulars are a guide and act as information only. All our details are given in good faith and believed to be correct at the time of printing but they don't form part of an offer or contract. No Winkworth employee has authority to make or give any representation or warranty in relation to this property. All fixtures and fittings, whether fitted or not are deemed removable by the vendor unless stated otherwise and room sizes are measured between internal wall surfaces, including furnishings.