



FLAT 15, EGERTON GARDENS, CHELSEA, LONDON, SW3
£681 PER WEEK FURNISHED

A BRIGHT TWO-BEDROOM APARTMENT SITUATED IN THE RENOWNED EGERTON GARDENS.

DESCRIPTION:

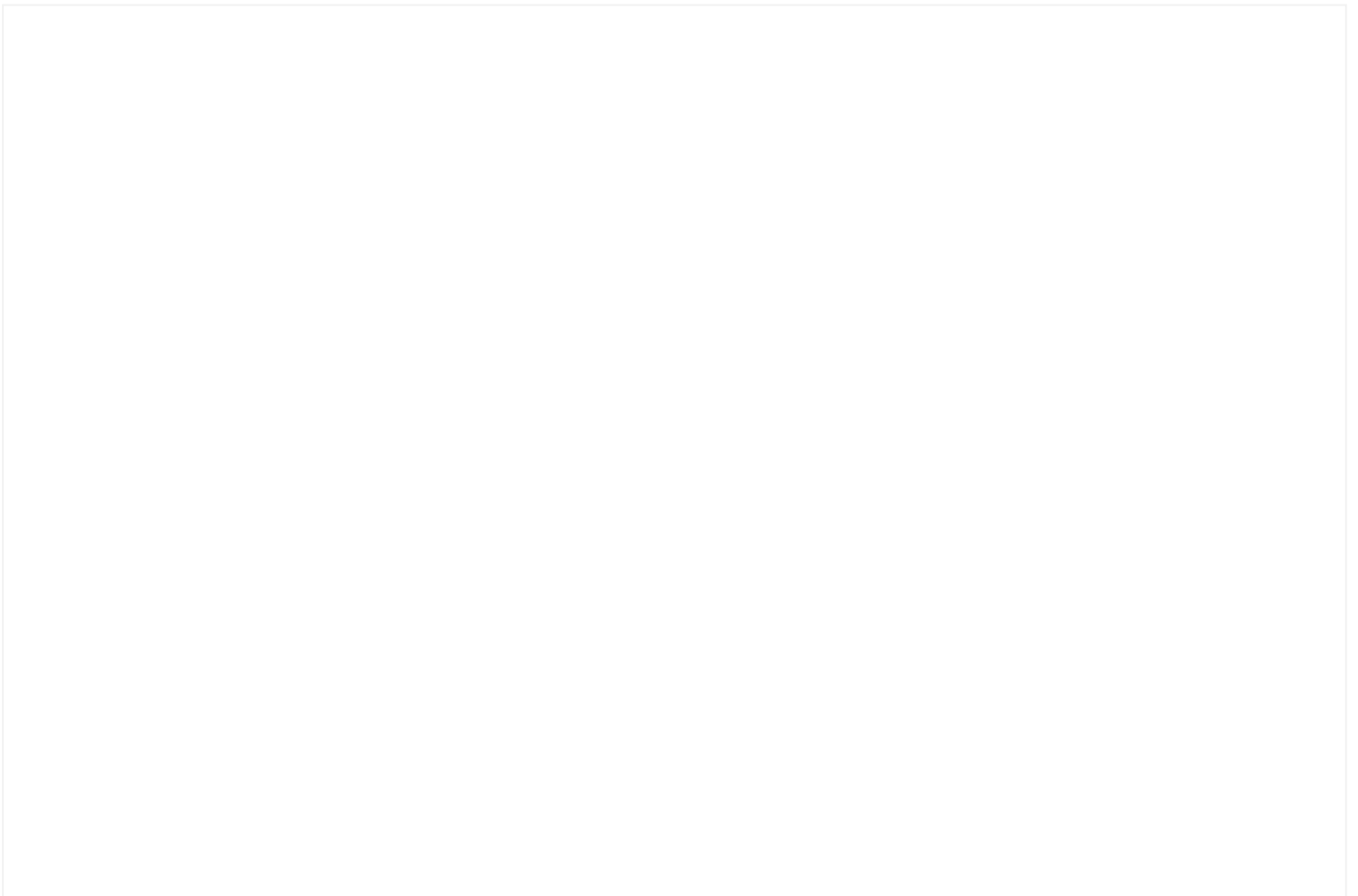
A bright two-bedroom apartment situated in the renowned Egerton Gardens.

AT A GLANCE

- Two Bedrooms
- Living Room with Dining Area
- Communal Garden Access (by arrangement)
- Prestigious Address

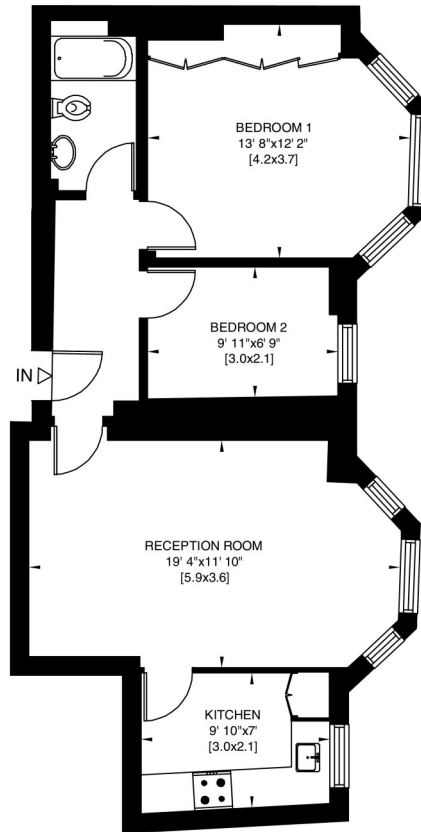
Knightsbridge & Chelsea | 0207 589 6616 | knightsbridge@winkworth.co.uk





EGERTON GARDENS
LONDON SW3

Gross Internal Area: 59 Sq. metres
637 Sq. feet



LOWER GROUND FLOOR

This floorplan is for illustration purposes only and is not to scale. The position and size of doors, windows, appliances and other features are approximate.

Deposit: £3405.00

Holding Deposit: 681.00

Council Tax Band: F

Where no figures are shown, we have been unable to ascertain the information. All figures that are shown were correct at the time of printing.

