



ELDERFIELD PLACE, SW17
£1,050,000 FREEHOLD

A MODERN WELL PRESENTED BRIGHT AND SPACIOUS FIVE BEDROOM TOWNHOUSE.

Tooting | 020 8767 5221 | tooting@winkworth.co.uk

Winkworth

for every step...

winkworth.co.uk



DESCRIPTION:

Presenting a modern, well-presented, and bright five-bedroom townhouse. The ground floor features a utility room/garage and a spacious eat-in kitchen with a conservatory that opens onto a well-maintained southwest-facing garden.

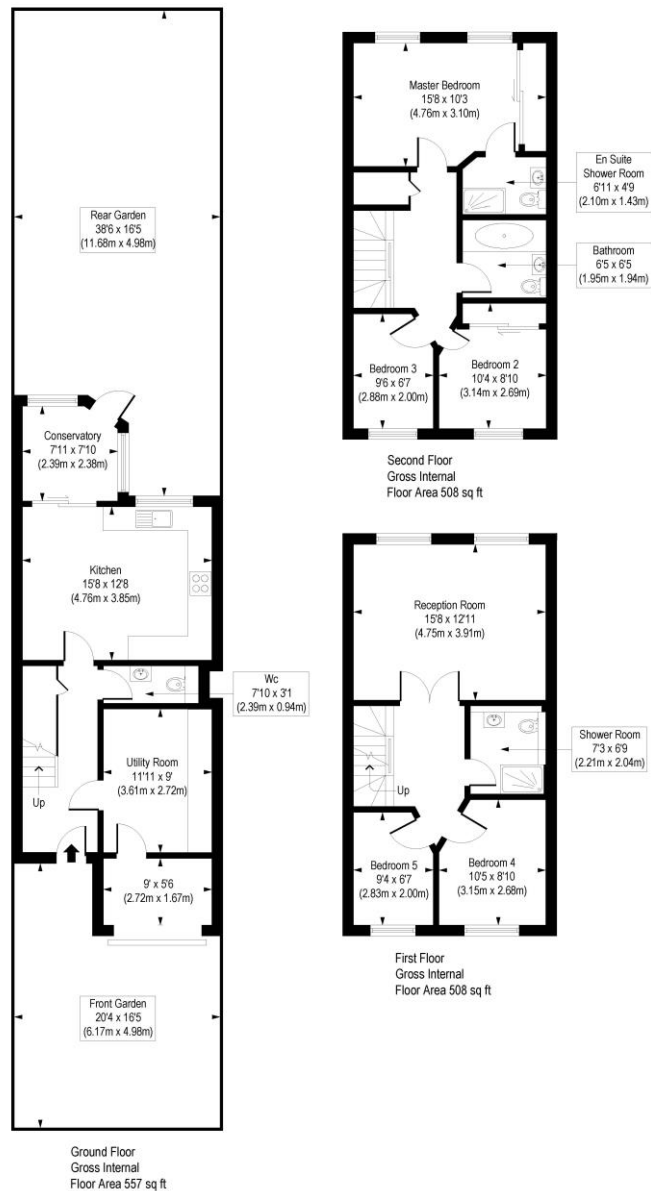
On the first floor, there are two bedrooms, a shower room, and a reception room. The second floor hosts an additional two bedrooms, a family bathroom, and a master bedroom with an en-suite shower room.

This property is within walking distance of local amenities, Tooting Bec Common, and lido, ideal for pleasant walks, jogging, or cycling. It is also conveniently close to a variety of shops, bars, and restaurants. Excellent transport links are available, with Tooting Broadway Underground Station (Northern Line) is approximately 0.9 miles away and Tooting Rail Station (Thameslink) is also approximately 0.8 miles away.



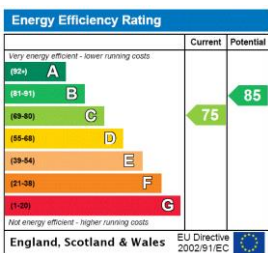
Elderfield Place, SW17

Approx. Gross Internal Floor Area 1573 sq. ft / 146.10 sq. m



COMPLIANT WITH RICS CODE OF MEASURING PRACTICE. Floorplan is for illustrative purposes only and is not to scale. Every attempt has been made to ensure the accuracy of the floorplan shown, however all measurements, fixtures, fittings and data shown are an approximate interpretation for illustrative purposes only. Liability for errors, omissions or mis-statement through negligence or otherwise is hereby excluded.

This floorplan is for illustration purposes only and is not to scale. The position and size of doors, windows, appliances and other features are approximate.



Tooting | 020 8767 5221 | tooting@winkworth.co.uk

for every step...

winkworth.co.uk

Winkworth wishes to inform prospective buyers and tenants that these particulars are a guide and act as information only. All our details are given in good faith and believed to be correct at the time of printing but they don't form part of an offer or contract. No Winkworth employee has authority to make or give any representation or warranty in relation to this property. All fixtures and fittings, whether fitted or not are deemed removable by the vendor unless stated otherwise and room sizes are measured between internal wall surfaces, including furnishings.