



69 WOODWARD CLOSE, WINNERSH, WOKINGHAM, BERKSHIRE, RG41 5UU
£735,000 FREEHOLD

Winkworth



WOODWARD CLOSE

Situated in a quiet cul-de-sac, within the highly sought after Winnersh Farm development, is this well-proportioned family home that has been well maintained by the current owner sitting on a very attractive corner plot. The property is within easy reach of local amenities including Winnersh station and Sainsbury's.

The accommodation is set over two floors, with a ground floor living space that comprises a large reception hall, dual aspect living room with a feature fireplace and double doors leading to the dining room, fitted kitchen breakfast room, utility room, family room/study and cloakroom.

On the first floor there are four generous family bedrooms three with fitted wardrobes, a refitted ensuite to the master bedroom along with the family bathroom.

To the rear of the property there is a private part walled corner plot garden laid mainly to lawn with two patio areas and an attractive flower and shrub beds. To the side is a driveway with off road parking and access to a double garage with eaves storage area above.

Ideally located for easy access to Winnersh Mainline railway station and transport links, including the M4 Motorway and A329M, the property also falls within popular school catchment areas.

Situation - Winnersh Farm is a popular family area built in the early 1990's by Heron Homes. The development is made up of 3, 4 and 5 bedroom detached properties. For the commuter the A329(M)/M4 can be accessed further along the Reading Road. Twyford station is 5 miles north with access to Paddington benefiting from the Crossrail service. The development is ideally located for families, with schools for all ages nearby and easy access to Dinton Pastures Country Park.





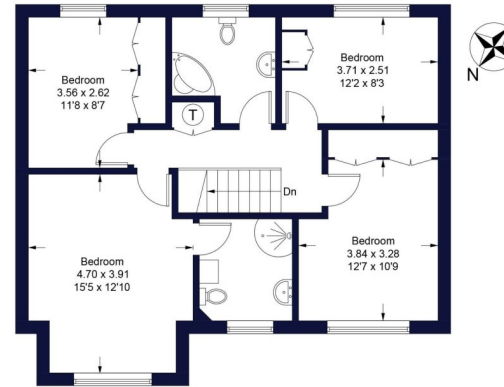
Woodward Close

Approximate Gross Internal Area Total = 148.3 sq m / 1596 sq ft

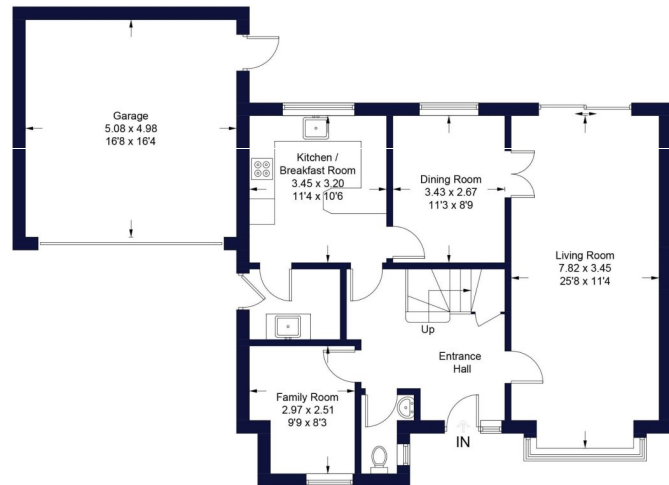
Garage = 25.6 sq m / 275 sq ft

Total = 173.9 sq m / 1871 sq ft

Winkworth



First Floor
73.1 Sq m / 787 Sq ft



Ground Floor
75.2 Sq m / 809 Sq ft

Illustration for identification purposes only, measurements are approximate, not to scale. FloorplansUsketch.com © 2024 (ID1072163)

Wokingham | 01189 072777 | wokingham@winkworth.co.uk

Winkworth wishes to inform prospective buyers and tenants that these particulars are a guide and act as information only. All our details are given in good faith and believed to be correct at the time of printing but they don't form part of an offer or contract. No Winkworth employee has authority to make or give any representation or warranty in relation to this property. All fixtures and fittings, whether fitted or not are deemed removable by the vendor unless stated otherwise and room sizes are measured between internal wall surfaces, including furnishings.

Winkworth