



FOUNDERS GARDENS, SE19  
**£1,750 PER MONTH FURNISHED, PART FURNISHED**

## SPACIOUS TWO DOUBLE BEDROOM MAISONETTE TO RENT

Crystal Palace | 02038693222 | [crystalpalace@winkworth.co.uk](mailto:crystalpalace@winkworth.co.uk)

**Winkworth**

for every step...



## DESCRIPTION:

Winkworth is pleased to offer this spacious two double bedroom split level maisonette for rent.

The property is split over the first and second floors with your own private entrance and comprises entrance hallway with storage, stairs up to the first floor with a WC, spacious reception and dining room and fitted kitchen. On the second floor are two good sized double bedrooms both with great fitted wardrobe space and family bathroom. The property has great natural light throughout and there is a garage en-bloc.

The property is offered furnished or part-furnished and is available in August.

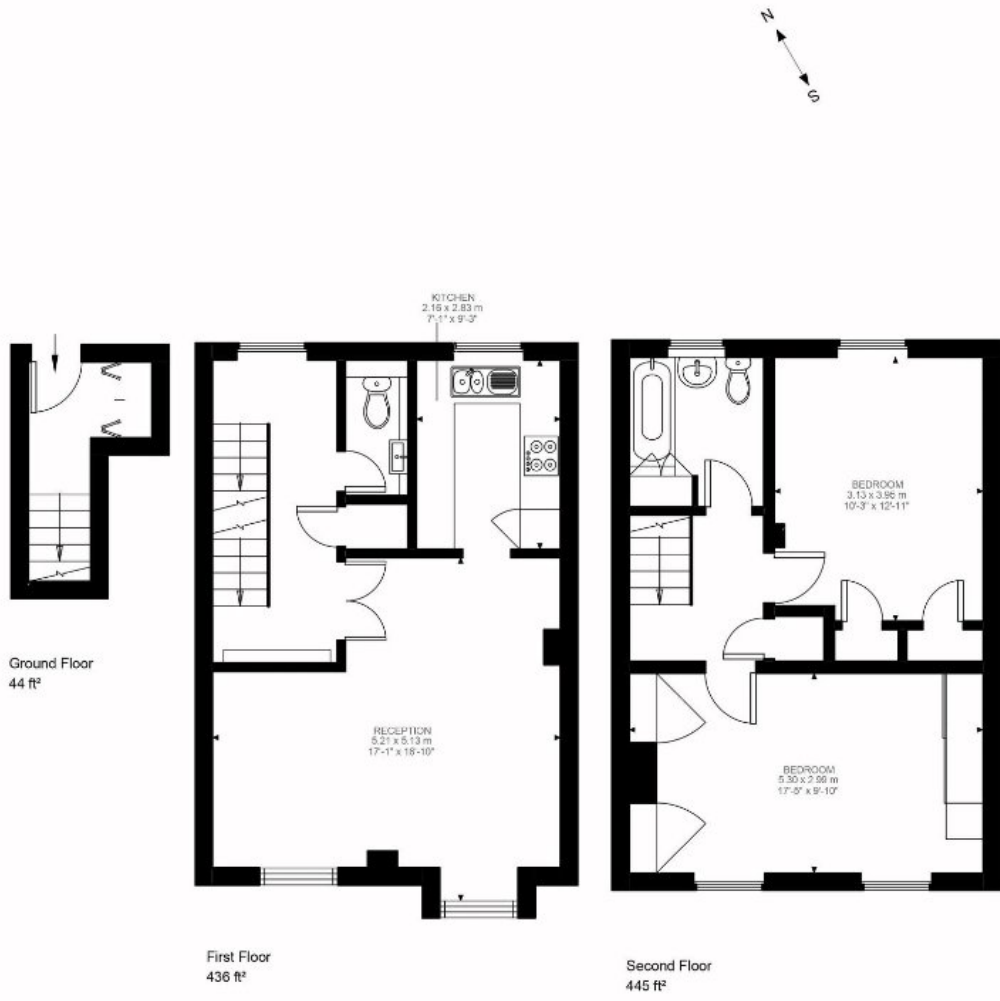
Ideally located in a quiet cul-de-sac and within the school catchment for Rockmount Primary school. The transport links of Crystal Palace, Gipsy Hill and West Norwood are all within easy reach as well as multiple excellent bus routes including SL7 to Waterloo. Crystal palace Triangle is a short walk away and offers and plethora of independent shops, cafes, bars & restaurants.

## AT A GLANCE

- Two double bedrooms
- Split level maisonette
- Spacious reception & dining room
- Separate kitchen
- Full bathroom
- WC
- Garage
- Furnished or part furnished
- Available August







**Founders Gardens SE19**  
Approximate Gross Internal Area  
86.04 SQ.M / 926 SQ.FT

Illustration for identification purposes only. Not to scale.  
Floor Plan Drawn According To RICS Guidelines.

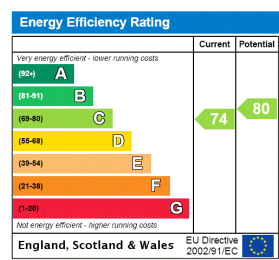
This floorplan is for illustration purposes only and is not to scale. The position and size of doors, windows, appliances and other features are approximate.

**Deposit: £0.00**

**Holding Deposit:**

**Council Tax Band:**

Where no figures are shown, we have been unable to ascertain the information. All figures that are shown were correct at the time of printing.



for every step...

Crystal Palace | 02038693222 | crystalpalace@winkworth.co.uk

winkworth.co.uk

Winkworth wishes to inform prospective buyers and tenants that these particulars are a guide and act as information only. All our details are given in good faith and believed to be correct at the time of printing but they don't form part of an offer or contract. No Winkworth employee has authority to make or give any representation or warranty in relation to this property. All fixtures and fittings, whether fitted or not are deemed removable by the vendor unless stated otherwise and room sizes are measured between internal wall surfaces, including furnishings.