



PLOT 138, FLAXWELL FIELDS, RUSKINGTON, SLEAFORD, NG34 9AP £152,260 FREEHOLD

Winkworth are delighted to offer for sale the first 'affordable' Two Bedroom End of Terrace Bungalow on the ever popular Chanception Homes Flaxwell Fields Development in Ruskington. This is a sub-market affordable dwelling scheme property and purchasers must be approved by the North Kesteven District Council as being eligible in line with the criteria within the Section 106 legal agreement. The affordable price is set at 66.2% of open market value and there is a legal restriction on the property to ensure it shall always remain as an affordable property.

The Bungalow itself comprises of a Lounge with Bay Window, Kitchen, Two Double Bedrooms with the Master having a Bay Window and a Wet Room. The Garden will come fully turfed with fencing to all aspects. There is also an allocated parking space. Call 01529 303377 for more information on this plot and criteria to be eligible to purchase.

Sleaford | 01529 303 377 | sleaford@winkworth.co.uk

Winkworth

for every step...

winkworth.co.uk

ACCOMMODATION

Lounge - 15'6" x 11'5" (4.72m x 3.48m)

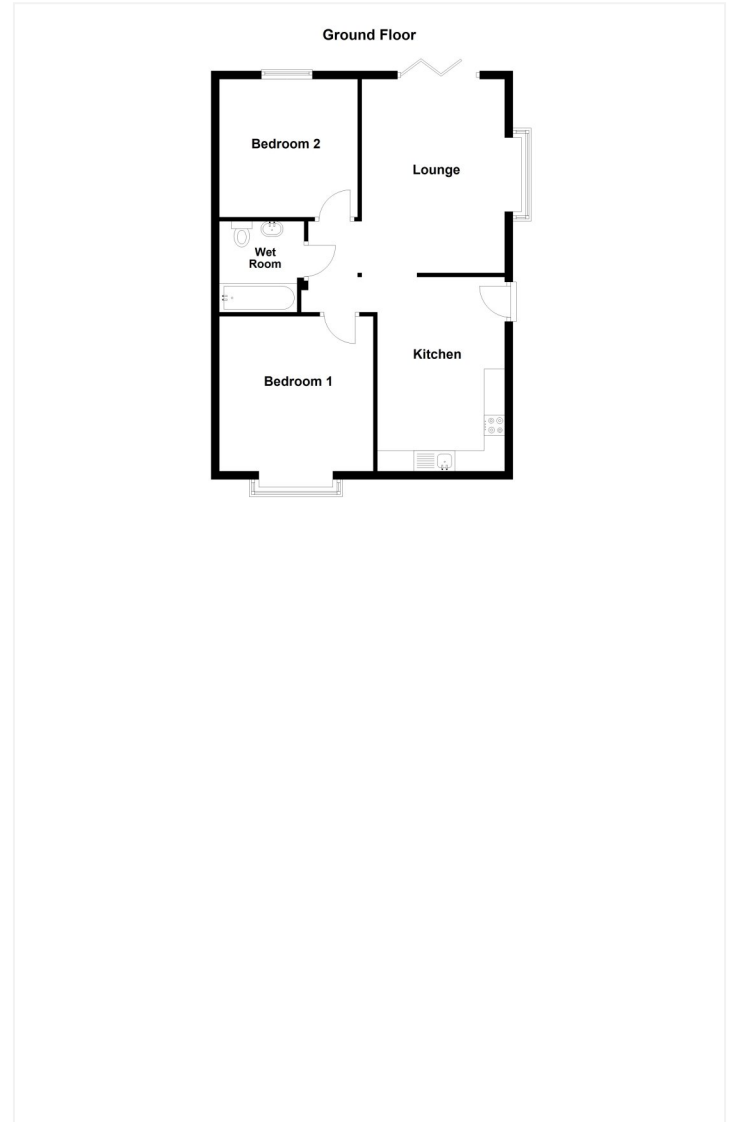
Kitchen - 15'6" x 10'2" (4.72m x 3.1m)

Bedroom One - 12'4" x 12'4" (3.76m x 3.76m)

Bedroom Two - 11' x 11'1" (3.35m x 3.38m)

Wet Room

Agents Note - All photos used are for example purposes only. Therefore colour of brick may vary. A management fee applies for the development of approx £100 per anum.



This floorplan is for illustration purposes only and is not to scale. The position and size of doors, windows, appliances and other features are approximate.

Tenure: Freehold

Service Charge: £100 per annum

Council Tax Band: Not yet Available

Where no figures are shown, we have been unable to ascertain the information. All figures that are shown were correct at the time of printing.

Sleaford | 01529 303 377 | sleaford@winkworth.co.uk

Winkworth

for every step...

winkworth.co.uk

Winkworth wishes to inform prospective buyers and tenants that these particulars are a guide and act as information only. All our details are given in good faith and believed to be correct at the time of printing but they don't form part of an offer or contract. No Winkworth employee has authority to make or give any representation or warranty in relation to this property. All fixtures and fittings, whether fitted or not are deemed removable by the vendor unless stated otherwise and room sizes are measured between internal wall surfaces, including furnishings.