



PUTNEY HILL, LONDON, SW15
£1,850 PER MONTH UNFURNISHED

An impressive, newly renovated one double bedroom flat situated in the most convenient Central Putney location

Putney | 020 8877 1000 | putney@winkworth.co.uk

Tenant Fees Apply: Details of fees for tenant referencing, tenancy agreement admin fees and renewal fees are available on the Winkworth website and the link can be found with the displayed rent for the property. Tenants should ensure they are fully conversant with these upfront fees and other costs that are involved at the outset of the tenancy before making an offer to rent and your local Winkworth office will provide written details upon request.

winkworth.co.uk

Winkworth

for every step...



DESCRIPTION:

The property has been carefully designed and finished to an exceptional standard to maximise space; boasting a light and airy feel throughout.

The spacious entrance hall leads to a contemporary open plan kitchen/reception room with generous ceiling height, featuring a carefully designed modern custom-built kitchen with Corian style work surfaces and integrated Bosch appliances.

Adjoining the entrance hall is the double bedroom with generous fitted cabinetry complemented by a well-appointed fully tiled luxury bathroom.

The property is conveniently located on Putney Hill close to the Upper Richmond Road and Putney High Street. It is within very easy reach of both Putney Mainline Station (National Rail) and East Putney Underground Station (District Line) with their swift West End and City communications. Putney High Street offers excellent multiple and specialist shopping facilities.

Winkworth

for every step...

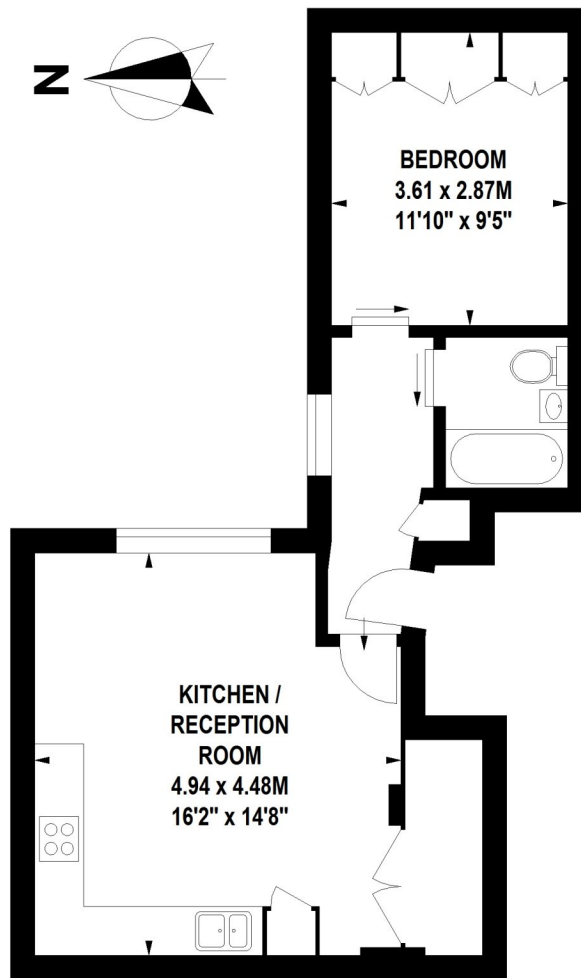


Winkworth

for every step...

Putney Hill, SW15

Approximate Gross Internal Area 43 sq.m / 463 sq. ft



Raised Ground Floor

Winkworth

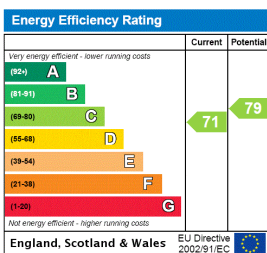
020 8788 9295

Floor Plan produced by Mays Floorplans©

Illustration for identification purposes only, not to scale

All measurements are maximum, and include wardrobes and window bays where applicable

This floorplan is for illustration purposes only and is not to scale. The position and size of doors, windows, appliances and other features are approximate.



Putney | 020 8877 1000 | putney@winkworth.co.uk

for every step...

winkworth.co.uk

Winkworth wishes to inform prospective buyers and tenants that these particulars are a guide and act as information only. All our details are given in good faith and believed to be correct at the time of printing but they don't form part of an offer or contract. No Winkworth employee has authority to make or give any representation or warranty in relation to this property. All fixtures and fittings, whether fitted or not are deemed removable by the vendor unless stated otherwise and room sizes are measured between internal wall surfaces, including furnishings.