



FLAT 7, LYME GROVE HOUSE, LYME GROVE, LODDIGES ROAD, LONDON, E9
'OFFERS IN EXCESS OF' **£400,000 LEASEHOLD**

CHARMING ONE-BEDROOM FLAT WITH SOUTH-FACING BALCONY IN THE HEART OF LONDON FIELDS

Hackney | 020 8986 4216 | hackney@winkworth.co.uk

Winkworth

winkworth.co.uk

See things differently



DESCRIPTION:

This stylish one-bedroom flat in the heart of E9, located on the popular Lyme Grove, offers an ideal opportunity for both first-time buyers and investors. Boasting a spacious, contemporary design, the property features a well-proportioned living area that seamlessly connects to a private south-facing balcony – perfect for enjoying outdoor space and soaking up the sun.

The property benefits from a good-size kitchen with ample storage and workspace, ideal for home cooking or entertaining. The open-plan layout enhances the feeling of space, providing a comfortable and versatile living area.

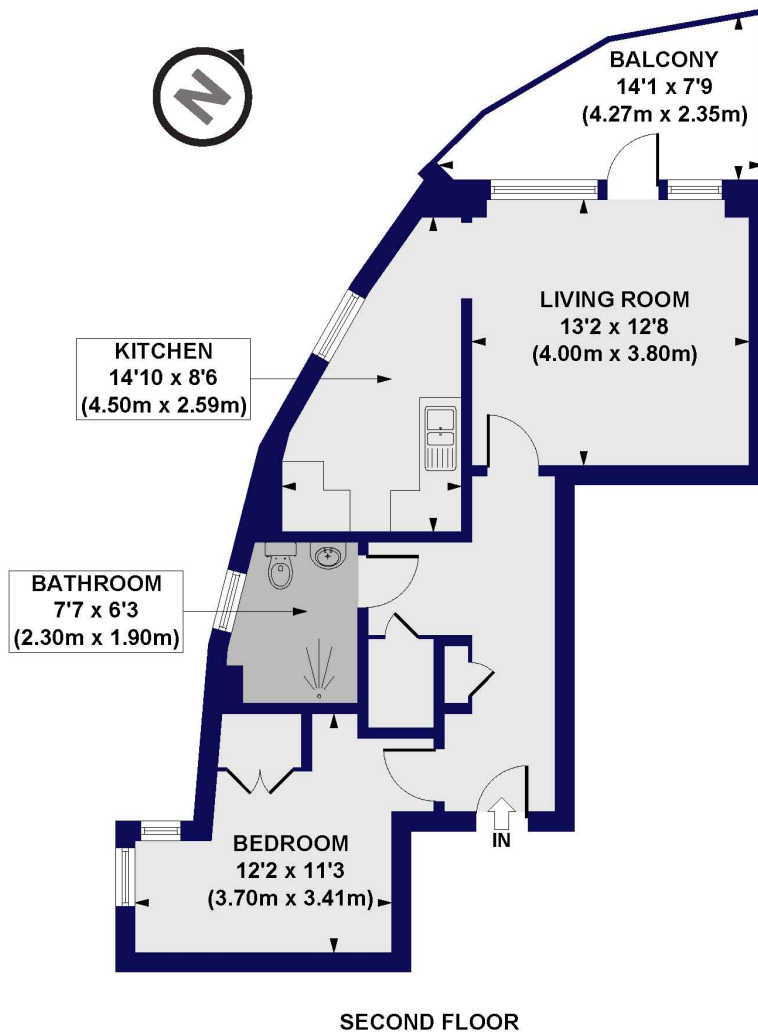
The bedroom is spacious and quiet, offering a peaceful retreat at the end of the day. The flat's proximity to London Fields Station means that you are perfectly located for easy access to Central London and beyond, making it an ideal choice for commuters. Additionally, the vibrant local area offers a range of amenities, including trendy cafes, restaurants, and green spaces, such as the nearby London Fields park.

Winkworth



Winkworth

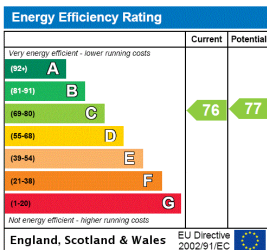
Lyme Grove House, Lyme Grove, Loddiges Road, E9
 Approx. Gross Internal Floor Area 557 sq. ft / 51.71 sq. m



All measurements of walls, doors, windows, fittings and appliances, including their size and location, are shown as standard sizes and do not constitute any warranty or representation by the seller, their agent or CP Creative. Any intending purchaser must satisfy himself by inspection or otherwise as to the correctness of the information contained in these plans. This plan is for illustrative purposes only and should be used as such by any prospective purchasers.

Winkworth

This floorplan is for illustration purposes only and is not to scale. The position and size of doors, windows, appliances and other features are approximate.



Hackney | 020 8986 4216 | hackney@winkworth.co.uk

Winkworth

winkworth.co.uk

See things differently

Winkworth wishes to inform prospective buyers and tenants that these particulars are a guide and act as information only. All our details are given in good faith and believed to be correct at the time of printing but they don't form part of an offer or contract. No Winkworth employee has authority to make or give any representation or warranty in relation to this property. All fixtures and fittings, whether fitted or not are deemed removable by the vendor unless stated otherwise and room sizes are measured between internal wall surfaces, including furnishings.