



STREATHAM VALE, SW16  
£400,000 SHARE OF FREEHOLD

## CHARMING TWO-BEDROOM FLAT WITH PRIVATE GARDEN AND EXCELLENT AMENITIES IN STREATHAM VALE

Streatham | 020 8769 6699 | [streatham@winkworth.co.uk](mailto:streatham@winkworth.co.uk)

**Winkworth**

for every step...

[winkworth.co.uk](http://winkworth.co.uk)



### DESCRIPTION:

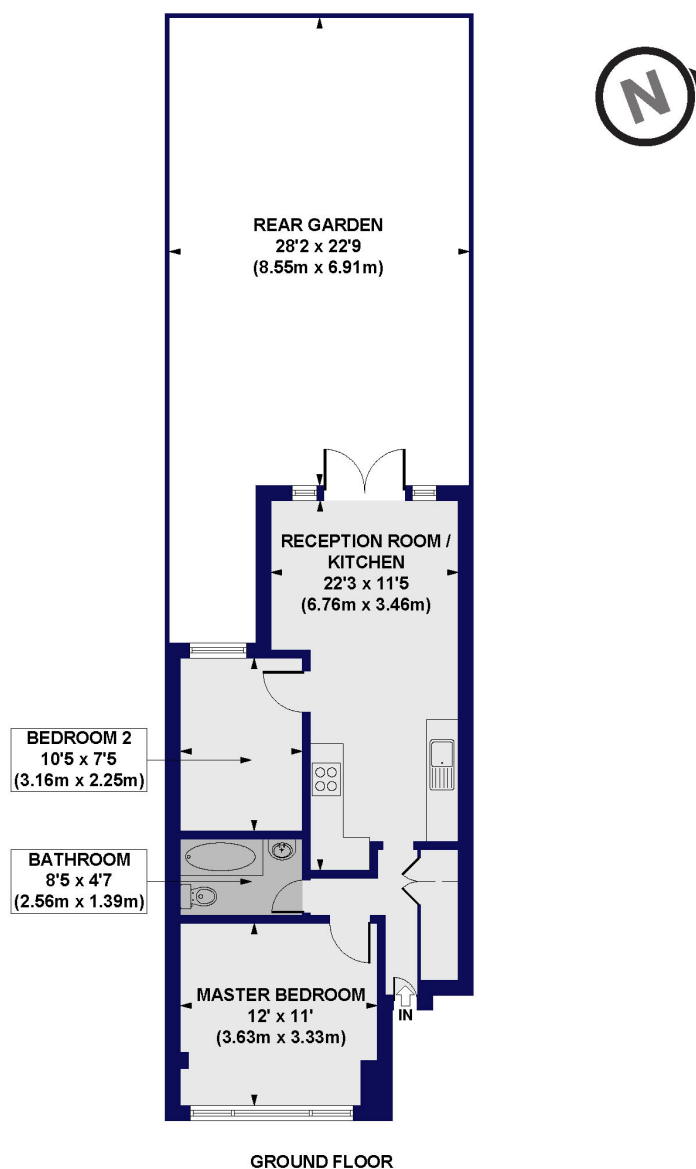
Set in the heart of Streatham Vale, this charming ground-floor flat offers a seamless blend of style and functionality. Upon entering, you are welcomed into a spacious and open-plan reception room and kitchen, bathed in natural light from the large windows and French doors leading to a private rear garden. The kitchen features contemporary cabinetry, tiled splashbacks, and ample workspace for cooking and entertaining. The property comprises two well-proportioned bedrooms, including a generously sized master bedroom with a large window overlooking the front of the property. The second bedroom is perfect as a guest room, home office, or nursery, providing flexible accommodation to suit your needs. The modern bathroom, finished with sleek fittings, includes a shower over the bathtub and a stylish vanity unit. The highlight of this home is undoubtedly the private garden, a tranquil retreat ideal for al fresco dining, gardening, or simply unwinding after a long day. The flat is located moments from a large Lidl supermarket and a selection of local shops, including a post office and newsagents. For outdoor enthusiasts, the green open spaces of Streatham and Mitcham commons are within easy reach, while families will appreciate the nearby Granton Primary School, popular with local parents.





## Streatham Vale, SW16

Approx. Gross Internal Floor Area 522 sq. ft / 48.53 sq. m



All measurements of walls, doors, windows, fittings and appliances, including their size and location, are shown as standard sizes and do not constitute any warranty or representation by the seller, their agent or CP Creative. Any intending purchaser must satisfy himself by inspection or otherwise as to the correctness of the information contained in these plans. This plan is for illustrative purposes only and should be used as such by any prospective purchasers.

**Winkworth**

This floorplan is for illustration purposes only and is not to scale. The position and size of doors, windows, appliances and other features are approximate.

**Tenure:** Share of Freehold

**Term:** 980 year and 9 months

**Council Tax Band:** C

Where no figures are shown, we have been unable to ascertain the information. All figures that are shown were correct at the time of printing.

Streatham | 020 8769 6699 | streatham@winkworth.co.uk

**Winkworth**

for every step...

[winkworth.co.uk](http://winkworth.co.uk)

Winkworth wishes to inform prospective buyers and tenants that these particulars are a guide and act as information only. All our details are given in good faith and believed to be correct at the time of printing but they don't form part of an offer or contract. No Winkworth employee has authority to make or give any representation or warranty in relation to this property. All fixtures and fittings, whether fitted or not are deemed removable by the vendor unless stated otherwise and room sizes are measured between internal wall surfaces, including furnishings.