



PRINCIPAL SQUARE, LONDON, E9  
£1,646.67 PER MONTH FURNISHED, PART FURNISHED, UNFURNISHED

## STUNNING ONE BEDROOM SCHOOL CONVERSION APARTMENT

Hackney | 020 8986 4216 | [hackney@winkworth.co.uk](mailto:hackney@winkworth.co.uk)

Tenant Fees Apply: Details of fees for tenant referencing, tenancy agreement admin fees and renewal fees are available on the Winkworth website and the link can be found with the displayed rent for the property. Tenants should ensure they are fully conversant with these upfront fees and other costs that are involved at the outset of the tenancy before making an offer to rent and your local Winkworth office will provide written details upon request.

[winkworth.co.uk](http://winkworth.co.uk)

**Winkworth**

See things differently



## DESCRIPTION:

A stunning one-bedroom apartment situated on the second floor of a sought after school conversion within a gated development. It's finished to a high standard and set moments from Chatsworth Road. The property offers one large double bedroom with wraparound glass brick wall and a contemporary family bathroom suite. The kitchen is exceptional and an ideal space for entertaining being open to the reception which has a characterful exposed brick wall, the reception itself is flooded with natural light and gives access to the private balcony. The apartment further benefits from a breakfast bar, wooden floors, access to a vast roof terrace with outstanding views and private off-street parking.

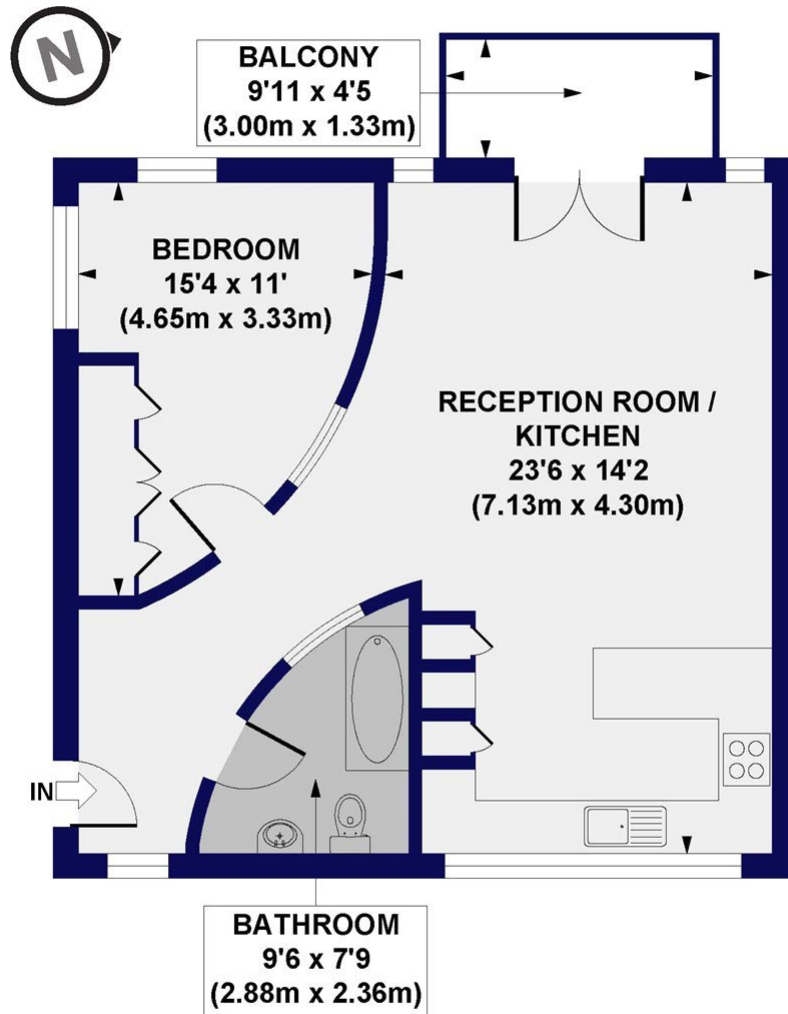
Ideally located close to Chatsworth Road, Mabley Green and Victoria Park with the City & West End within easy reach thanks to the local transport links.

**Winkworth**



**Winkworth**

**Principal Square, E9**  
 Approx. Gross Internal Floor Area 635 sq. ft / 58.97 sq. m

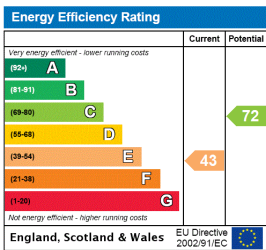


**SECOND FLOOR**

All measurements of walls, doors, windows, fittings and appliances, including their size and location, are shown as standard sizes and do not constitute any warranty or representation by the seller, their agent or CP Creative. Any intending purchaser must satisfy himself by inspection or otherwise as to the correctness of the information contained in these plans. This plan is for illustrative purposes only and should be used as such by any prospective purchasers.

**Winkworth**

This floorplan is for illustration purposes only and is not to scale. The position and size of doors, windows, appliances and other features are approximate.



Hackney | 020 8986 4216 | [hackney@winkworth.co.uk](mailto:hackney@winkworth.co.uk)

**Winkworth**

[winkworth.co.uk](http://winkworth.co.uk)

See things differently

Winkworth wishes to inform prospective buyers and tenants that these particulars are a guide and act as information only. All our details are given in good faith and believed to be correct at the time of printing but they don't form part of an offer or contract. No Winkworth employee has authority to make or give any representation or warranty in relation to this property. All fixtures and fittings, whether fitted or not are deemed removable by the vendor unless stated otherwise and room sizes are measured between internal wall surfaces, including furnishings.