



CAMDEN HILL ROAD, SE19  
**£1,600 PER MONTH FURNISHED**

## BEAUTIFULLY PRESENTED ONE BEDROOM FLAT FOR RENT

Crystal Palace | 02038693222 | [crystalpalace@winkworth.co.uk](mailto:crystalpalace@winkworth.co.uk)

**Winkworth**

for every step...

[winkworth.co.uk](http://winkworth.co.uk)



## DESCRIPTION:

Winkworth is pleased to offer this beautifully presented one bedroom flat for rent in the heart of Crystal Palace.

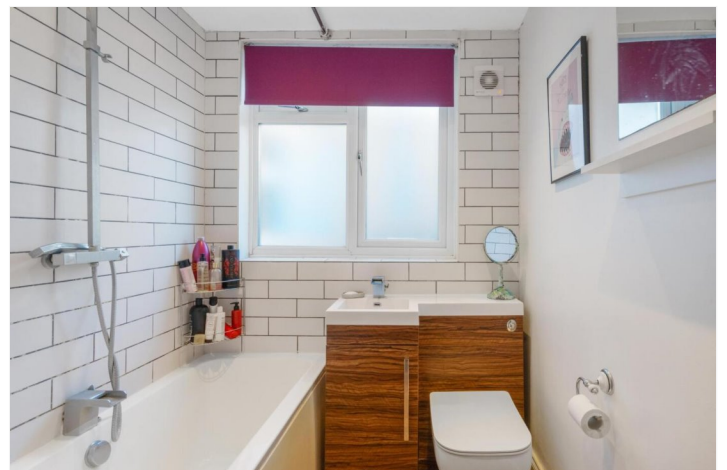
The property is located on the lower ground floor and benefits from having its own private entrance. Comprising entrance hallway, spacious reception with bay window allowing for an abundance of natural light, good sized bedroom with fitted wardrobes across one side of the room offering great storage solutions. Modern bathroom suite and eat in kitchen to the rear with patio doors out onto the easy to maintain paved garden.

The property has been finished to a contemporary standard throughout, is offered fully furnished & available from mid-December.

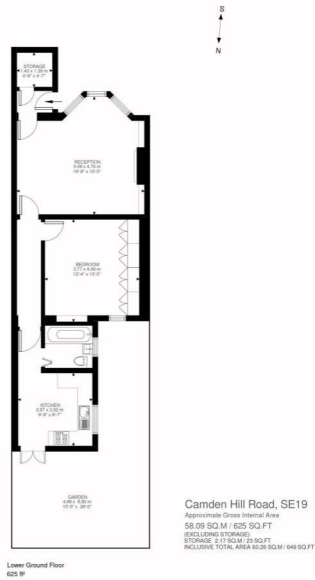
The property is ideally located only a short walk to Crystal Palace Tringle which offers a vast array of independent shops, cafes, bars & restaurants. Gipsy Hill & Crystal Palace Station are both within easy walking distance and offer trains into London Bridge & Victoria in under 30 minutes plus the Overground Network from Crystal Palace.

## AT A GLANCE

- One bedroom
- Lower ground floor
- Own entrance
- Patio garden
- Fully furnished
- Holding Deposit: £369.23 (1 weeks rent)
- Deposit: £1,846.15 (5 weeks rent)
- Lambeth Council Tax Band C: £1,658.14pa







Lower Ground Floor  
625 sq

Illustration for identification purposes only. Not to scale.  
Floor Plan Drawn According To RICS Guidelines.

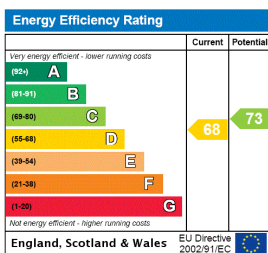
This floorplan is for illustration purposes only and is not to scale. The position and size of doors, windows, appliances and other features are approximate.

**Deposit: £0.00**

**Holding Deposit:**

**Council Tax Band: C**

Where no figures are shown, we have been unable to ascertain the information. All figures that are shown were correct at the time of printing.



Crystal Palace | 02038693222 | crystalpalace@winkworth.co.uk



for every step...

winkworth.co.uk

Winkworth wishes to inform prospective buyers and tenants that these particulars are a guide and act as information only. All our details are given in good faith and believed to be correct at the time of printing but they don't form part of an offer or contract. No Winkworth employee has authority to make or give any representation or warranty in relation to this property. All fixtures and fittings, whether fitted or not are deemed removable by the vendor unless stated otherwise and room sizes are measured between internal wall surfaces, including furnishings.